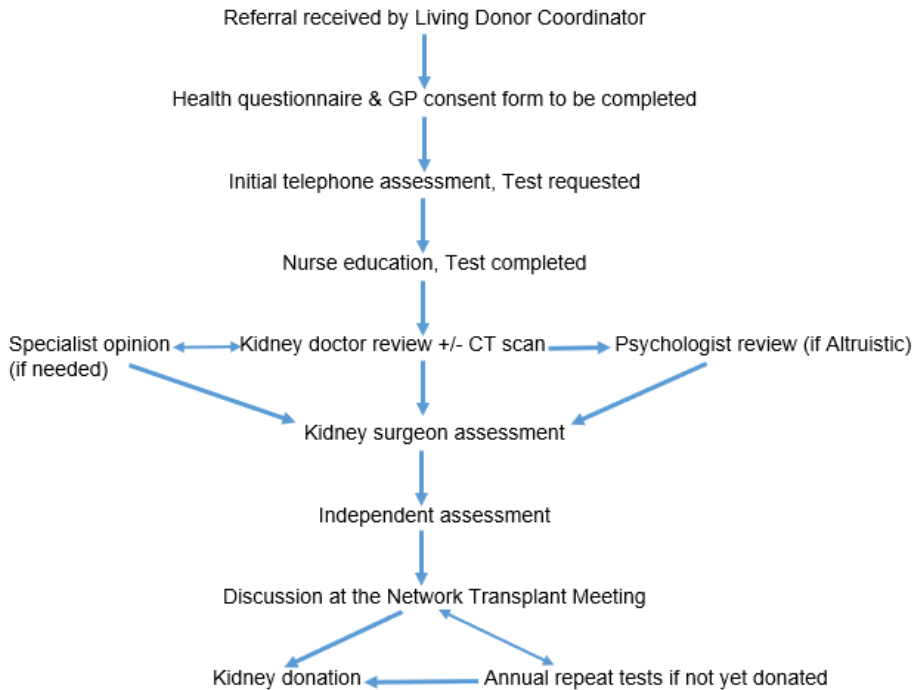


Renal Transplant Services

Getting Ready for Kidney Donation: Checklist of my investigations

This leaflet explains about your kidney donation work up process and the investigations you require to assess your suitability as a donor. If you have any further questions, please speak to a doctor or nurse caring for you.

Living Donor Work Up Pathway



We aim to complete your kidney donation work up within 18 weeks of receiving the referral. Please be aware that any positive test will require further investigation/s and therefore might prolong the work up process.

Name:	D.O.B:	
	Hospital no:	
TESTS and APPOINTMENTS	Appointment date	DONE (✓)
Blood Test 1: Virology, routine bloods		
Urine Test 1		
Nurse education, blood pressure, weight		
Chest X-ray		
ECG – Heart reading		
Kidney Ultrasound		
NM GFR – Kidney function test		
ETT – Exercise Test (if needed)		
ECHO – Heart ultrasound (if needed)		
24 hour BP (if needed)		
Blood Test 2: Tissue typing 2 + virtual XM		
Urine Test 2		
Kidney doctor assessment		
Psychology review (if Altruistic donor)		
CT kidney angiogram – Scan of kidneys to look at blood vessels in more detail		
Kidney surgeon assessment		
Urine Test 3		
Independent assessment		
SMEAR - Screening for cervical cancer		

MAMMOGRAM – Screening for breast cancer		
BOWEL SCREEN – Screening for bowel cancer		
ANY ADDITIONAL TESTS		
<p>You are required to do the highlighted tests. When you are given the dates, please contact the transplant team on 020 8725 0305 / 0745 or email Janice.Tayone@stgeorges.nhs.uk and Rojean.Tavarro@stgeorges.nhs.uk with the dates.</p>		

Contact us

If you have any questions or concerns about your kidney donation work up, please contact the Living Donor Coordinators: Janice Tayone on 020 8725 0305 or Rojean Tavarro on 020 8725 0745 or Rhia Fernandez Lead Nurse for Renal Transplant Services on 020 8725 0117 (Monday to Friday, 8.00am to 4.00pm). Out of hours, please contact Champneys Ward on 020 8725 0062.



For more information, leaflets on conditions, procedures, treatments and services offered at our hospitals, please visit www.stgeorges.nhs.uk

Reference: RTS_GRKD_02 **Published:** December 2024 **Review date:** December 2026