

# Paediatric intussusception 'How to' Video: Quality Improvement project

T. Hughes, L. Denning, R. Williams.

St George's Hospital, Blackshaw Road, London, SW17 0QT

## Introduction:

Paediatric intussusception is a rare but challenging emergency presentation to the radiology department, at our institution 'out of hours' this is a registrar led service. The aim of this quality improvement project was to assess the impact of a short video, on the confidence and understanding of performing the diagnostic ultrasound and fluoroscopic air enema reduction, for the registrar body at St George's Hospital.



Figure 1: Paediatric ultrasound department

## Methods:

An initial pre video questionnaire was sent to the registrar body to assess their confidence and understanding of how to perform paediatric intussusception diagnosis and reduction, following this a short video was released giving quick and important details to performing the procedure at our hospital. After the video had been viewed a post video questionnaire was completed and also used to acquire feedback on the video.

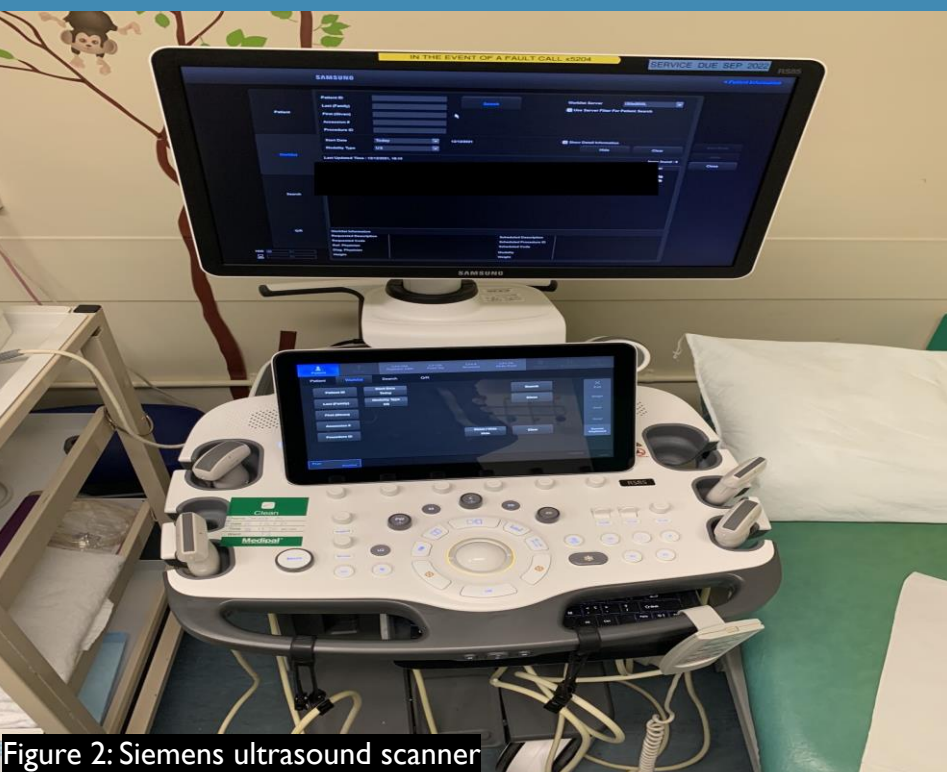


Figure 2: Siemens ultrasound scanner

## Results:

The pre video questionnaire was completed by 25 trainees and the post video questionnaire by 13 out of a total of 49 trainees. There was an increase in understanding following the video with examples including; where to perform the ultrasound (pre 60%, post 100%), where to perform the fluoroscopic reduction (pre 64%, post 100%), what pressures are recommended for reduction (pre 36%, post 100%), how many cycles to complete (pre 52%, post 100%). Prior to the video only 12% of respondents had seen an example fluoroscopic reduction, the video contained an example case meaning all trainees who viewed the video had now gained exposure to a successful reduction case. Greater than 90% of trainees reported an increase in confidence in performing the procedure following the video, the remainder reporting no change.

Figure 3&4: air enema tubing and pressure gauge + oxygen supply connector

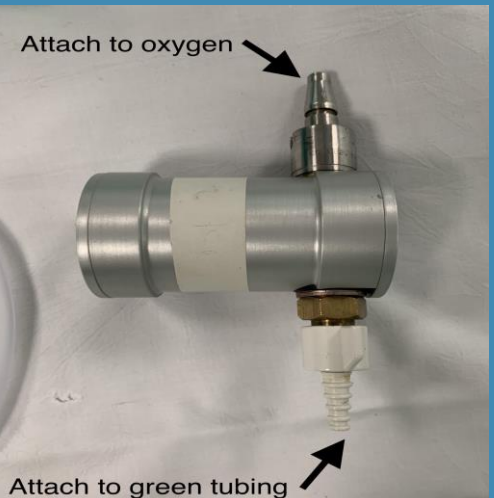


Figure 5: Fluoroscopy suite

## Discussion:

The response to the video was very positive within our department and the results indicated an increase in knowledge and confidence. Video learning does not compensate for practical experience in performing the procedure however paediatric intussusception is a very rare pathology and this is a simple but effective tool in the learning process. Following this project we will aim to create more 'how to' videos for the department.

**NHS**

**St George's University Hospitals**

NHS Foundation Trust