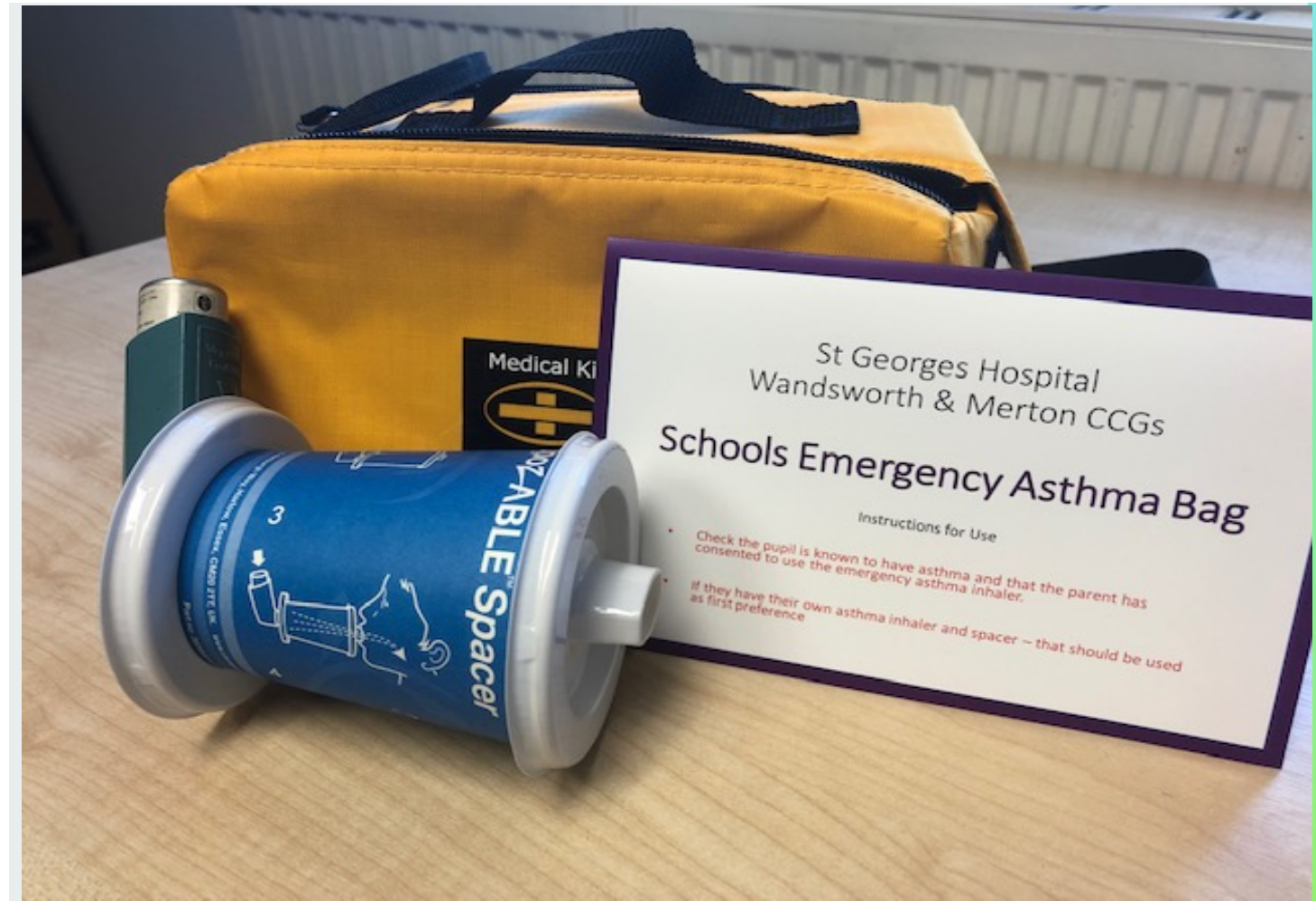


St George's Hospital School's Emergency Asthma Bag

How to use the Bag
Training for Schools

Dr Richard Chavasse
Consultant Respiratory Paediatrician

October 2020



Emergency Asthma Inhalers in School

Background

- Schools have been entitled to have an emergency asthma inhaler since 2014 following a change in the Human Medicines Regulation Act https://assets.publishing.service.gov.uk/government/uploads/system/uploads/attachment_data/file/416468/emergency_inhalers_in_schools.pdf
- The emergency inhaler should only be used if:
 - The child has a diagnosis of asthma or wheeze and has been prescribed their own inhaler.
 - Their own inhaler (and spacer) is not available.
 - Their parents have given consent to use the emergency inhaler.
- An asthma education slide set will also be available

Emergency Asthma Inhalers in School Planning

- The Parent's responsibility
 - They should inform the school if their child has treatment for asthma.
 - They should provide the school with an asthma plan and a rescue inhaler (and spacer) – provided by their GP or hospital.
 - They should check and replenish the inhaler regularly.
- The School's responsibility
 - The school should have an asthma policy
 - The staff should have regular training in asthma management
 - There should be a register of children with asthma
 - The children's own rescue inhalers should be kept in an accessible place
 - The school should have an emergency asthma kit
- There should be a system to collect consent from parents to use the emergency asthma inhaler. This must be updated regularly.

Emergency Asthma Inhalers in School

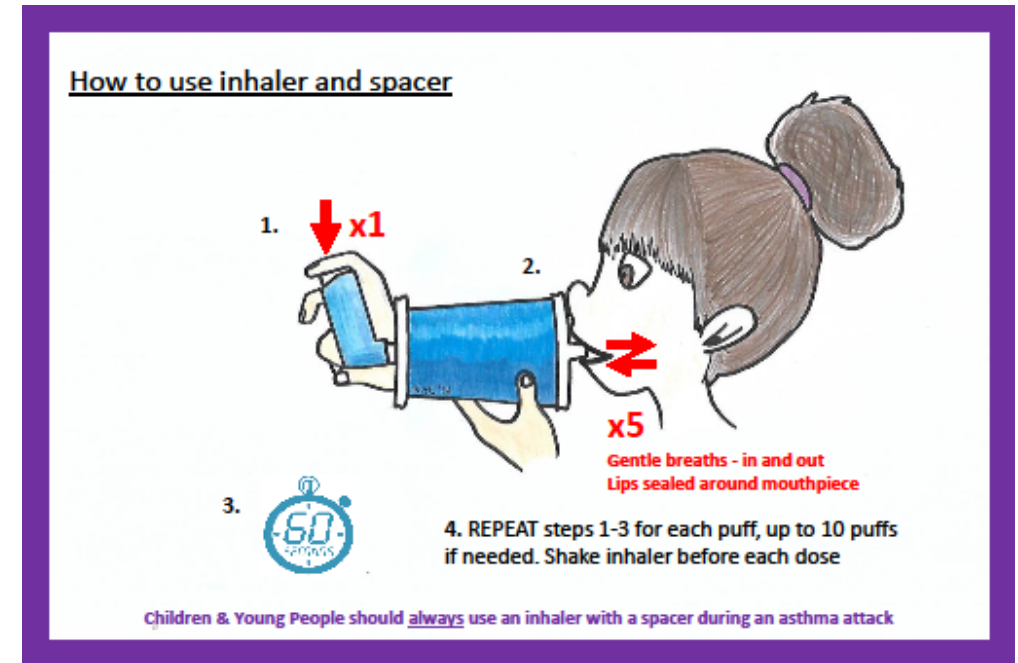
The Emergency Asthma Bag

- The St George's Hospital Emergency asthma bag contains:
 - An instruction sheet
 - A salbutamol (rescue) inhaler
 - 5 disposable spacers
 - A log of use
 - A sample asthma register which can be kept in the bag.
- **The bag should ONLY be used if the child's own inhaler is unavailable.**
- The spacers are single use and disposable.
- The inhaler casing should be washed after use in warm soapy water.
- The school should inform the parents and school nurse when the bag is used. This will allow appropriate follow up.

Emergency Asthma Inhalers in School

Use of the Asthma Bag

- Where possible, take the bag to the child and not the child to the bag.
- Sit the child up and keep them calm
- Put the spacer together
- Shake the inhaler
- Give the child 1 puff of the inhaler, followed by five normal breaths, in and out.
- Repeat a puff every 60 seconds, up to 10 times (10 puffs) if necessary, to relieve symptoms.
- If necessary call the emergency services – 999
- Record the event in the log
- Inform the parents and school nurse of the event.



**ALWAYS USE A SPACER IN
ACUTE ASTHMA**

Emergency Asthma Inhalers in School

General

- The Asthma Bags will be replaced (at present) by the CCG annually.
- The school nurse will be able to access replacement spacers if required
- If a child needs the emergency bag, the cause should be understood:
 - Why their own inhaler wasn't available
 - Is their asthma sub-optimally controlled
 - Was it a severe attack or used for minor symptoms
- Example documents are also available through the web link.