

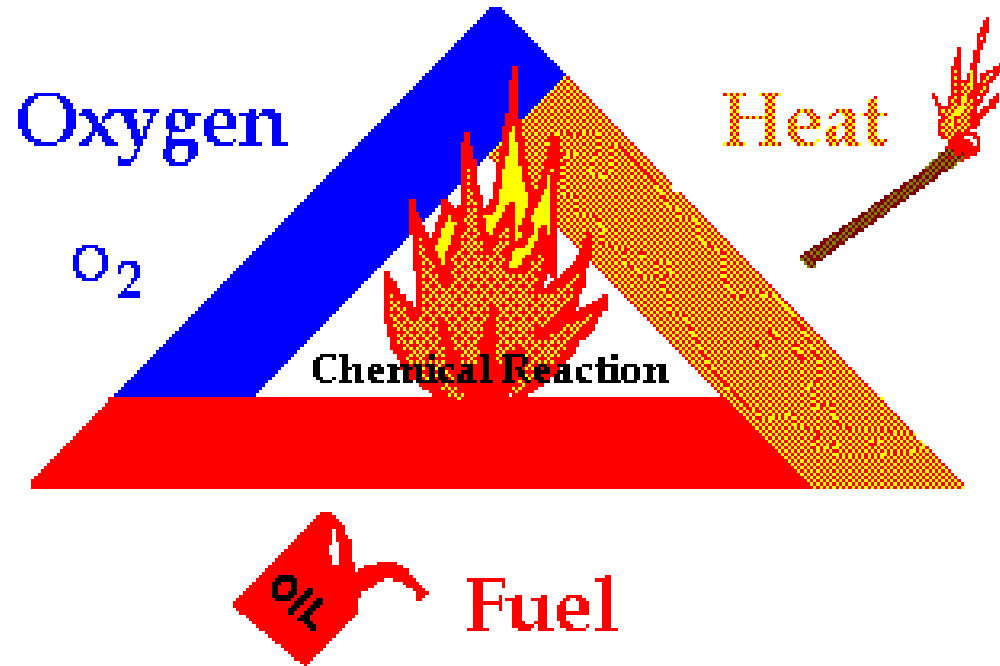
INDUCTION FIRE SAFETY TRAINING

by the Trust Fire Safety Department

AIMS:

- To help with understanding of fires in a hospital setting and how to prevent their outbreak
- For Staff to be able to minimise injuries to patients & themselves
- To help the Trust with complying with Fire Safety Legislation

Fire Triangle






POOR HOUSE-KEEPING



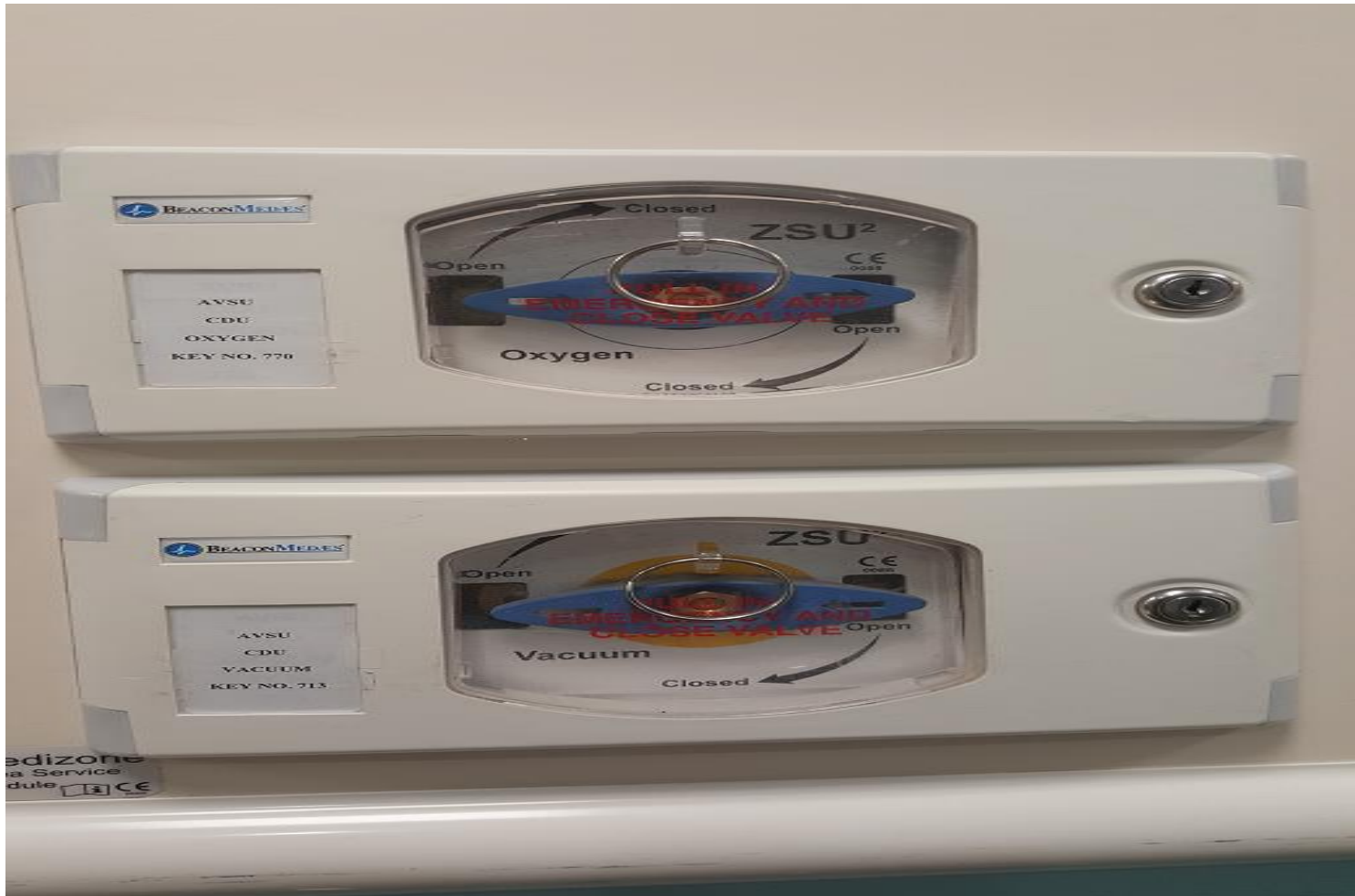
POOR HOUSE-KEEPING



Fire Safety measures in a Ward

- Automatic fire alarm 
- Manual call points 
- Emergency door releases 
- Fire doors
- Fire compartment walls
- Fire-fighting equipment 
- Medical gas shut-off valves

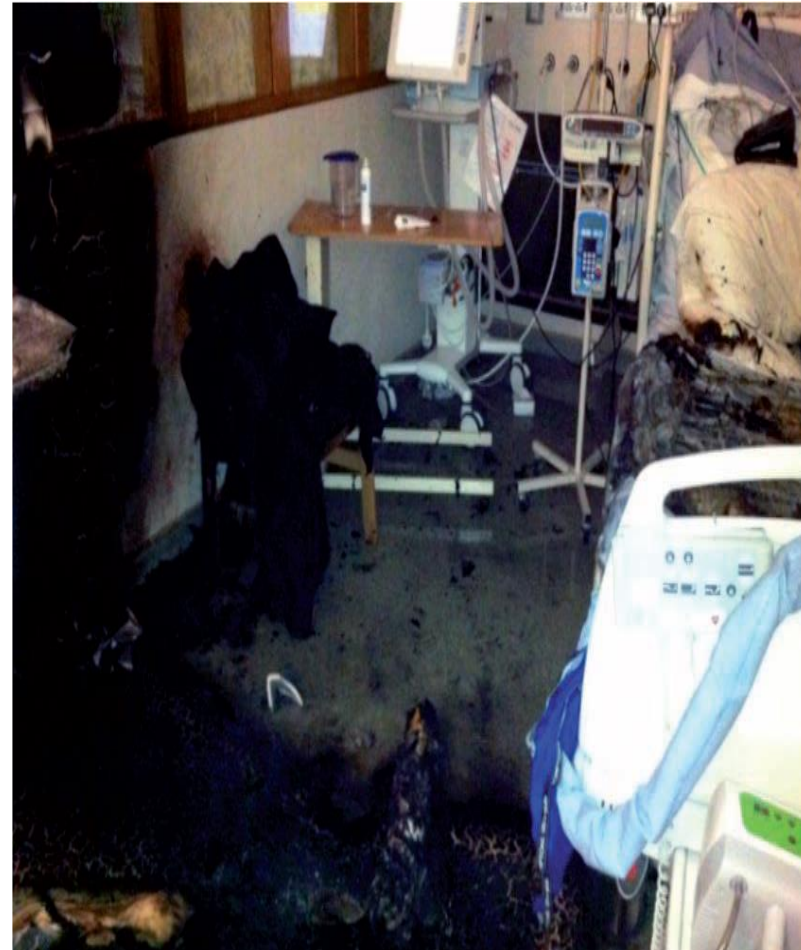
Medical gas shut-off valve



Cylinder fire incident

Royal United Hospital – ITU
Nov 2011

Bath ITU O₂ cylinder fire



Ignition stages of Cylinders

Investigations revealed a common trend for most cylinder fires: Ignition occurs

- ❖ when the valve is initially turned on
- ❖ when a flow-rate is selected

SAFE USE OF O₂ CYLINDERS

- Set-up the cylinder for patient use before placing it close to the patient
- a connect the tubing and oxygen delivery device to the cylinder
- slowly open the cylinder valve
- select the prescribed flow rate
- fit the oxygen delivery device to the patient

Methods of raising fire alarm

Automatic Fire Detector



'Shout'
FIRE!!!
FIRE!!!
FIRE!!!

Dial
6666

Manual call Point



Press

Fire Alarms

- Intermittent sound

- a warning of an outbreak of fire in the adjacent fire compartment. (close fire doors but do not lock them)

- Continuous sound

- a warning of an outbreak of fire within that particular fire compartment. (initiate evacuation procedures)

Evacuation

- NEVER USE A LIFT DURING FIRE EVACUATION
- **Horizontal evacuation**
 - Involves movement of patients from one compartment that is affected by fire, to the next, through a fire barrier on the same floor.
- **Vertical evacuation**
 - Involves movement of patients from one compartment floor to the next via stairs (using ski-sheets)
- **Simultaneous evacuation**
 - Involves a total evacuation of the building to marked fire assembly point outside the building.

FIRE SAFETY SIGNS



Prohibition signs

These signs prohibit actions detrimental to safety



FIRE EXIT SIGN



**FIRE
ASSEMBLY
POINT**



Warning signs

These signs give warning of potential risks

Action when you discover a fire

- Raise the alarm
- Assist patients/those who might need help to evacuate
- Evacuate
- Do not return to the building until instructed so by either Fire Warden, Manager or LFB

THE END

