

What does the Service Offer?

We offer the following depending on the needs of our patients:

- Screening (blood test) for sickle cell and thalassaemia
- Genetic counselling to support the local antenatal screening programme
- Pre-conceptual screening and counselling to couples planning their families
- Ongoing support to affected individuals with a major haemoglobinopathy disorder to maintain a healthy lifestyle in the community.
- Support for carers families/relatives and friends.
- A link between the hospital and community
- Education and training

Team Members

- An adult haemoglobinopathy specialist nurse
- Haemoglobinopathy specialist counsellor
- Paediatric haemoglobinopathy specialist nurse
- Team administrator

Contact Details

Sickle cell and thalassaemia counselling and information service



Balham Health Centre
120 Bedford Hill
Balham, London
SW12 9HS

020 8812 6236

Sicklethal.Balham@wpct.nhs.uk
Stgh-tr.sicklethal-balham@nhs.net
Sickle cell society
www.sicklecellsociety.org
UK thalassaemia society:
www.ukts.org

St George's Healthcare 
NHS Trust



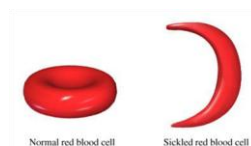
**Wandsworth sickle cell and
thalassaemia counselling and
information service**

Produced August 2011
to be reviewed August 2014



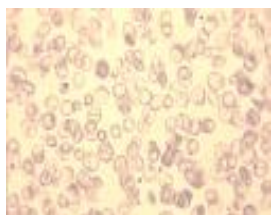
What are sickle cell and thalassaemia?

Sickle cell and thalassaemia are life-long, life threatening genetic disorders that affect red blood cells.



Sickle cell disease is the most commonly inherited genetic condition in Wandsworth it can

cause the red blood cells to change shape.



Thalassaemia major is a severe life-long disease which is managed by monthly blood transfusions and medication.

About the Service

The service provides and delivers:

A specialist nursing service including, advice, information, counselling and support at home. The service has strong links with local hospitals, GPs and primary care teams, in order to raise the awareness of sickle cell and thalassaemia conditions amongst the local community.

You can use our service if you:

- Are a resident in the Wandsworth borough
- Are living outside of Wandsworth but, have a GP in the borough
- Are booked to have your baby at St George's hospital

The service accepts the following:

- Self referrals
- Referrals from GPs
- Referrals from other haemoglobinopathy centres
- Referrals from hospitals
- Referrals from other health care professionals

We work closely with other services such as:

- Social services
- Physiotherapy
- Occupational therapy
- Full Circle – (alternative therapies)
- Housing association
- Health psychologist etc

Where can you be seen?

- Balham health centre
- St Georges hospital / outpatient clinics
- Nurse-led clinics
- At home