

LONDON RESILIENCE



preparing for emergencies

LONDON STRATEGIC EMERGENCY PLAN

February 2009

Version 5

If you require this document in an alternative format, please contact:

The London Resilience Team
Government Office for London
First Floor – Riverwalk House
157 – 161 Millbank
London
SW1P 4RR

E-mail: enquires-lrt@gol.gsi.gov.uk

Telephone: 020 7217 3228

Please note all our telephones can be used
as text phones.

Fax: 020 7217 3405

CONTENTS

Section 1 – Introduction	1
1.1 Background and Aim of the Strategic Emergency Plan	1
1.2 Objectives of the Strategic Emergency Plan	1
1.3 Audience	1
1.4 Plan Ownership, Authorisation and Administration	2
1.5 Audit and Amendments	2
1.6 Publication and Distribution	2
1.7 Data Protection	2
Section 2 - Context	3
2.1 Legislation and Guidance	3
2.2 Definition of an Emergency	3
2.3 London Strategic Emergency Planning Arrangements	4
London Regional Resilience Forum	4
London Resilience Programme Board	5
Sector Panels	5
Task & Finish Groups	5
London Resilience Team	5
Local Resilience Forums	6
2.4 Local Resilience Forums in London	7
2.5 Governance Arrangements Diagram	8
Section 3 - Civil Contingencies Act	9
3.1 Civil Contingencies Act Requirements for London	9
3.2 Training and Exercising within the London Resilience Partnership	9
3.3 Category One and Two responders	10
3.4 Renewing the CCA Arrangements in London	10
Section 4 - The Regional Response to a Major Incident	11
4.1 The Command & Control Protocol and LESLP	11
4.2 Immediate Impact Incident	11
4.3 Rising Tide Incident	12
4.4 Further Information	12

Section 5 - The Plans and Protocols of the London Resilience Partnership	13
5.1 Partnership Plans	13
5.2 Description of Partnership Plans	14
London Emergency Services Liaison Panel (LESLP) - Major Incident Procedure Manual	14
London Command and Control Protocol	14
London Science and Technical Advice Cell Arrangements	14
London Recovery Management Protocol	15
London Mass Evacuation Plan	15
London Regional Flu Pandemic Response Plan	16
London Flood Response Strategic Plan	17
London Humanitarian Assistance Centre Plan	17
London Mass Fatality Plan	18
London Regional Fuel Disruption Protocol	18
The London CBR Response Framework	19
Government Office for London Emergency Response Plan	19
London Resilience Strategy for Disability Equality in Emergency Planning	19
The London Voluntary Sector Capabilities Plan	20
Disaster Appeal Fund Plan	20
The London Local Authority Gold Operating Procedures	21
Section 6 - Communication	22
6.1 London Prepared Website	22
6.2 The London Media Emergency Plan	22
Section 7 - Questions, Comments and Amendments	23

SECTION 1 – INTRODUCTION

1.1 BACKGROUND & AIM OF THE STRATEGIC EMERGENCY PLAN

In April 2005, the London Resilience Team published the first version of the London Strategic Emergency Plan. This document provided a comprehensive overview of London's key plans which existed at the time. The Strategic Emergency Plan has been amended since, reflecting the alterations which have been made to existing plans as well as outlining the new plans which have been created. All plans are owned by the London Regional Resilience Forum.

Since the introduction of the Civil Contingencies Act 2004 (CCA) in 2005, all English Regions and Wales have been required to have a Generic Regional Response Plan (GRRP) enabling the activation of regional crisis management when needed.

This document summarises the plans for the strategic regional response of the London Resilience Partnership in responding to incidents requiring multi-agency co-ordination on a pan-London regional basis - a key element of which is the London Command and Control Protocol. In addition, this document also provides an overview of the requirements which the Civil Contingencies Act places on the region, and outlines the regions' response to an emergency.

Details of specific plans are available from the London Resilience Team (LRT) or by download from the London Prepared website - www.londonprepared.gov.uk).

1.2 OBJECTIVES OF THIS PLAN

The objectives of this plan are:

- To act as a signposting document to the more detailed plans which explain how to activate the London regional response;
- To provide an overview of the key responding plans of the London Resilience Partnership;
- To provide an understanding of responsibilities during a regional level incident;
- To act as a standard reference document for the Partnership, as well as the public, to illustrate the response arrangements of the London Resilience Partnership.

1.3 AUDIENCE

This plan is intended for representatives of agencies and organisations within the London Resilience Partnership who would have a role to play in the response to an emergency involving regional co-ordination arrangements. The plan is also intended for use by any individual or agency in neighbouring regions where inter-regional/national arrangements or responses are required. The plan will be made publicly available to provide information on the work

which has been completed by responding organisations in London to ensure that London is prepared. Finally, the plan may be distributed more widely to share good practice and information about the resilience work which has taken place in London.

1.4 PLAN OWNERSHIP, AUTHORISATION AND ADMINISTRATION

The Strategic Emergency Plan is owned by the London Regional Resilience Forum and is produced and maintained by the London Resilience Team.

1.5 AUDIT AND AMENDMENTS

This plan is subject to annual reviews, reflecting the alterations made to any Partnership plans as well as the creation of any new plans. All amendments to this document have been cleared by the London Resilience Programme Board.

1.6 PUBLICATION AND DISTRIBUTION

This plan will be published on the London Prepared website: <http://www.londonprepared.gov.uk> and is available to all. In addition, copies of the plan will be circulated to all members of the London Resilience Partnership.

1.7 DATA PROTECTION

Any requests under the Freedom of Information Act should be directed to the London Resilience Team at enquiries-lrt@gol.gsi.gov.uk. The plan is also subject to the Data Protection Act which requires that any contact details listed on the plan cannot be released without the authorisation of the individual listed.

SECTION 2 – CONTEXT

2.1 LEGISLATION AND GUIDANCE

The Civil Contingencies Act 2004 and its associated regulations and non statutory guidance establish a consistent national framework for Civil Protection in the United Kingdom. The Civil Contingencies Act 2004 can be viewed here:

www.opsi.gov.uk/acts/acts2004/20040036.htm.

The Act has two principal parts:

- Part 1 establishes a clear set of roles and responsibilities for those involved in emergency preparation and response at a local level, dividing local responders into two categories, imposing a different set of duties on each; and
- Part 2 deals with emergency powers, providing a framework for the use of special legislative measures to deal with the effects of the most serious emergencies.

Further specific guidance on the duties relating to London are shown in Chapter 9 of HM Guidance Emergency Preparedness:

http://www.ukresilience.gov.uk/media/ukresilience/assets/ep_chap_09.pdf

Further guidance is available from:

- **“Emergency Preparedness”**
www.ukresilience.gov.uk/preparedness.aspx
- **“Emergency Response and Recovery”**
www.ukresilience.gov.uk/response.aspx
- **“Civil Contingencies Act 2004: a short guide (revised October 2005)”**
<http://www.ukresilience.gov.uk/media/ukresilience/assets/15mayshortguide.pdf>
- **London Emergency Services Liaison Panel (LESLP) - (see section 5)**
www.leslp.gov.uk

2.2 THE DEFINITION OF AN EMERGENCY

Civil Contingencies Act 2004 – Definition of an Emergency

An ‘emergency’ is defined in Part 1 of the Act as an event or situation which threatens serious damage to human welfare in a place in the UK, the environment of a place in the UK, or war or terrorism which threatens serious damage to the security of the UK.

The definition of 'emergency' is concerned with consequences, rather than cause or source - therefore, an emergency inside or outside the UK is covered by the definition provided it has consequences inside the UK.

2.3 LONDON STRATEGIC EMERGENCY PLANNING ARRANGEMENTS

The responsibility for strategic multi-agency planning in London lies with the London Regional Resilience Forum. The LRRF is supported in its work by a number of additional groups including the London Resilience Programme Board, Sector Panels, Task & Finish Groups, Local Resilience Forums and the London Resilience Team.

The groups responsible for the emergency planning arrangements in London are:

London Regional Resilience Forum (LRRF)

This is the principal mechanism for supporting the planning and co-operation requirements of the Civil Contingencies Act 2004 at the regional level. The LRRF brings together Category One & Two responders (see Paragraph 3.3 for a definition) as well as other agencies and stakeholders in London to ensure that effective co-ordination and strategic planning is delivered across a range of key capabilities. In addition, the LRRF facilitates effective co-ordination with Central and Regional Government.

The LRRF is co-chaired by the Rt Hon John Healey MP, Minister for Local Government and the Rt Hon Tony McNulty MP, Minister for London; the Mayor of London, Boris Johnson, is Deputy Chair.

Membership of the London Regional Resilience Forum includes:

Blue Lights Sector Panel Chair	London Ambulance Service
British Airports Authority	London Coroners Group
British Transport Police	London Councils
Business Sector Panel Chair	London Fire Brigade
Cabinet Office, CCS	London Resilience Team
City of London Corporation	London Underground
City of London Police	Metropolitan Police Service
Communications Sector Panel Chair	Military – London District
Communities & Local Government	National Health Service London
Environment Agency	Network Rail
Faith Sector Panel Chair	Port of London Authority
Government Offices for London, East and South East	TRANSEC, Department for Transport
Greater London Authority	Transport for London
Health Protection Agency	Transport Sector Panel Chair
Home Office	Utilities Sector Panel Chair
Local Authorities Sector Panel Chair	Voluntary Sector Panel Chair
Local Resilience Forum Representative	

London Resilience Programme Board (LRPB)

The London Resilience Programme Board is the operational arm of the Partnership, overseeing, monitoring and challenging the work programme of the London Resilience Partnership, Task & Finish Groups and the London Resilience Team on behalf of the London Regional Resilience Forum. The LRPB additionally gives advice to develop and take forward pieces of work as well as overseeing the work progress.

The LRPB meets bi-monthly and is made up of partners who contribute resources to the London Resilience Team, as well as the Chairs of each Task & Finish Group. The Head of the London Resilience Team chairs each meeting.

The LRPB manage the yearly work plan on behalf of the Partnership, identifying areas of concern which they can escalate to the LRRF for resolution if considered necessary. The LRPB can choose to establish a Task & Finish Group to deliver a particular workstream – with Task & Finish Groups reporting all progress made back to the LRPB. The LRPB is also responsible for identifying gaps in emergency preparedness and vulnerability across the Partnership, to identify future work, and facilitate the Partnerships work to ensure the region's responsibilities under the Civil Contingencies Act are met. The LRPB is also responsible for giving approval to all plans and protocols that are produced by the various Task & Finish Groups.

Sector Panels

Sector Panels meet periodically throughout the year to develop and progress the regional work plan within their areas of expertise, to identify policy issues for further consideration and to advise other groups within the Partnership. Sector Panels report directly to the London Regional Resilience Forum.

Task & Finish Groups

In order to progress a particular piece of work, the London Resilience Programme Board can choose to establish a Task & Finish group to address the issues. Each group draws together individuals with the necessary expertise to deliver the project. Each Task & Finish group remains in existence for as long as is necessary to carry out all the tasks allocated to them. Each Task & Finish Group reports directly to the London Resilience Programme Board who can then escalate any issues to the London Regional Resilience Forum if considered necessary.

London Resilience Team (LRT) - Government Office for London

The London Resilience Team is based within the Government Office for London and comprises a small core team of civil servants plus secondees who are drawn from organisations represented at the London Regional Resilience Forum.

The team provides the secretariat to both the London Regional Resilience Forum and the London Resilience Programme Board, and provides membership to each Sector Panel and Task & Finish group. Additionally, a representative from the London Resilience Team attends each of the six quarterly Local Resilience Forums in order to ensure links with the sub regional tier.

In an emergency, the London Resilience Team takes the role of the Government Liaison Team with an appointed Government Liaison Officer from within this team attending Gold meetings. The role of the Government Liaison Officer is to be the interface between local responders and the Gold meetings with central Government departments and their Ministers.

Local Resilience Forums (LRF)

The London Local Resilience Forums (LRF) provide a mechanism through which the duty to co-operate is carried out under the Civil Contingencies Act by Category One and Two responders in London. They oversee the production of the Community Risk Register and report to the London Regional Resilience Forum (LRRF).

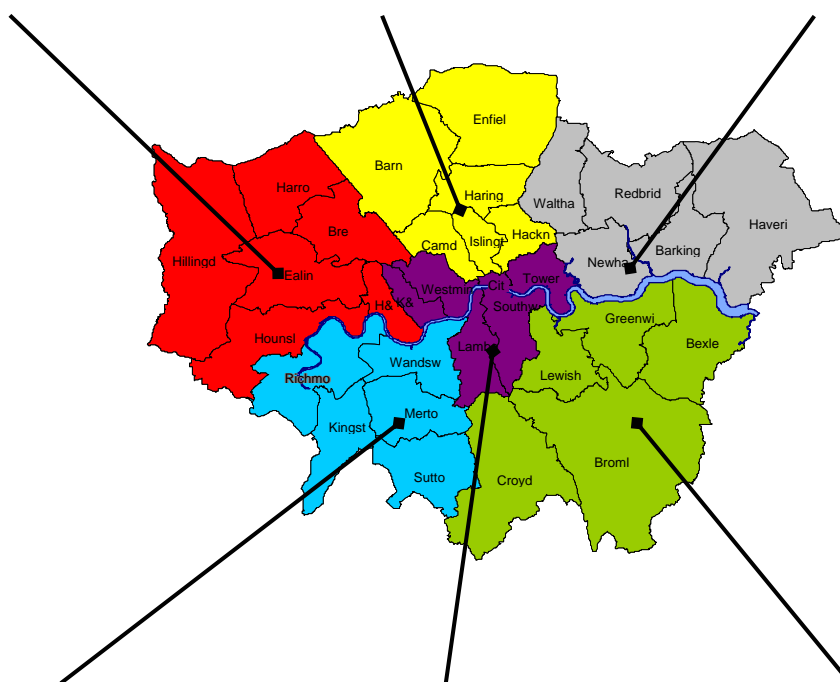
As laid down in the statutory guidance to the Civil Contingencies Act, the London Fire and Emergency Planning Authority (LFEPA) provides the Secretariat to the six London LRFs (see Fig. 1 below). These are chaired by a Local Authority Chief Executive from one of the Local Authorities within that Local Resilience Forum. Further to the administrative support of the LRFs, LFEPA will seek to ensure the consistent implementation of regional policy in the six LRFs in London. More detailed information can be found at: www.london-fire.gov.uk/LocalResilienceForums.asp

The current LRFs' operation and arrangements may alter during 2009 following the completion of the Cabinet Office led Civil Contingencies Act Enhancement Programme – please see Paragraph 3.4 for further details.

2.4 LOCAL RESILIENCE FORUMS IN LONDON.

Figure 1 – Map of the Local Resilience Forums (LRF) across London

West LRF	North Central LRF	North East LRF
Brent	Barnet	Barking & Dagenham
Ealing	Camden	Havering
Hammersmith & Fulham	Enfield	Newham
Harrow	Hackney	Redbridge
Hillingdon	Haringey	Waltham Forest
Hounslow	Islington	

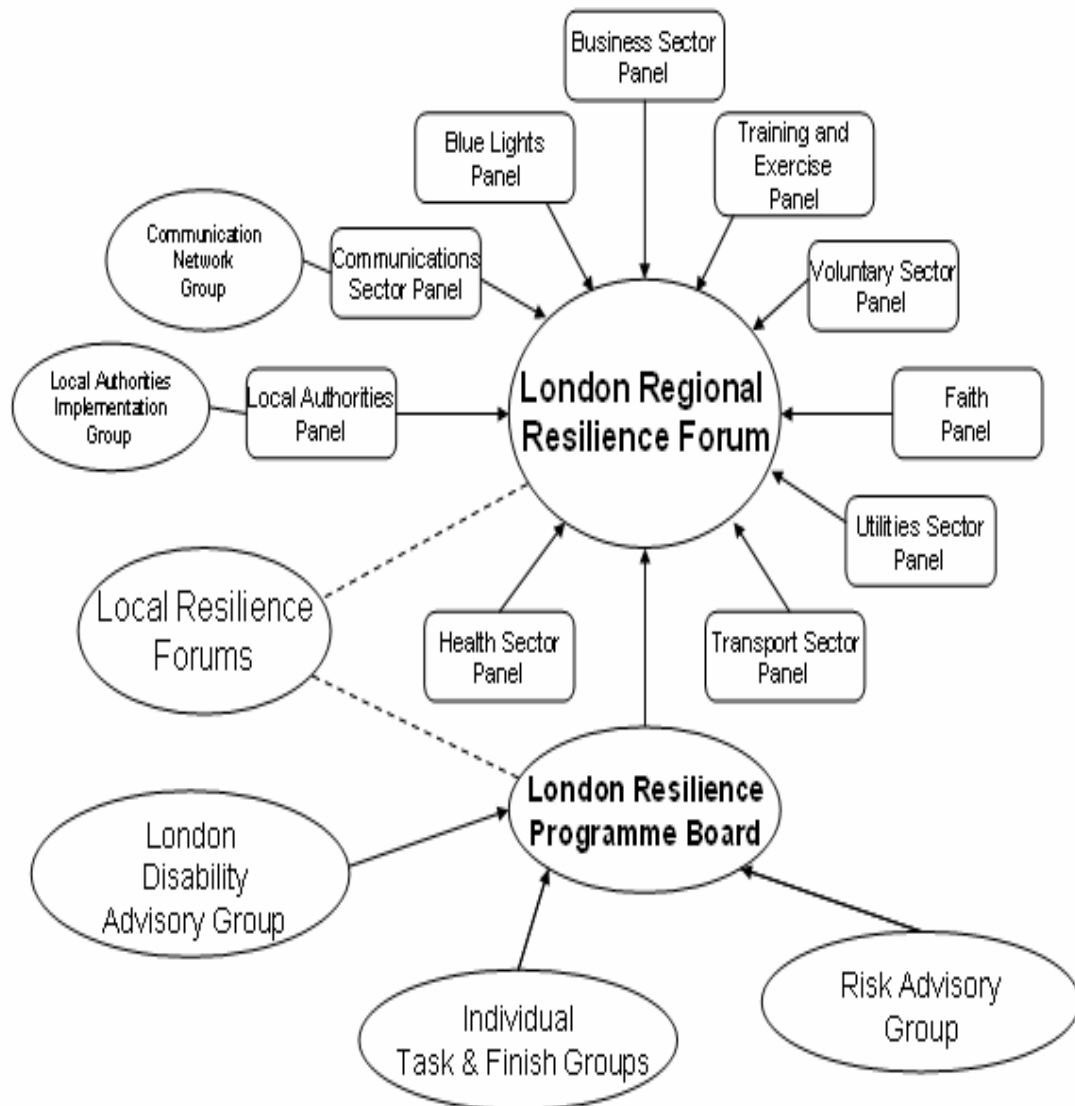


South West LRF	Central LRF	South East LRF
Kingston upon Thames	City of London	Bexley
Merton	Royal Borough of Kensington & Chelsea	Bromley
Richmond upon Thames	Lambeth	Croydon
Sutton	Southwark	Greenwich
Wandsworth	Tower Hamlets	Lewisham
	City of Westminster	

2.5 GOVERNANCE ARRANGEMENTS DIAGRAM

The Governance arrangements of the London Resilience Partnership are illustrated below.

Figure 2 – Summary of the London Resilience Partnership Planning and Delivery Process



Note – The Individual Task & Finish Groups currently operational include: Flooding, Pandemic Influenza, Recovery, Resilient Telecoms, Mass Fatalities, CBRN, Command & Control, Disability, Excess Deaths, Warning & Informing, Telecommunications, Mass Evacuation, Mass Casualties and Fuel.

SECTION 3 – CIVIL CONTINGENCIES ACT

3.1 CIVIL CONTINGENCIES ACT REQUIREMENTS FOR LONDON

London's current plans and procedures provide the necessary framework to meet the requirements of the Civil Contingencies Act. The Civil Contingencies Act 2004 additionally requires that each region has a Generic Regional Response Plan to ensure *“that, should it be necessary, regional crisis management machinery can be activated as smoothly as possible”*. This document fulfils that requirement.

CCA guidance states that:

At the local level, the generic plan will deliver four key practical benefits:

- *A recognised corporate basis of response for the region, to any type, or most types, of emergency;*
- *Key supporting elements (that is, capabilities and procedures) which can be selected from and combined as necessary, depending upon the nature of the emergency;*
- *A recognised framework for*
 - *awareness raising throughout the Region;*
 - *developing training and exercising throughout the region;*
 - *building ownership of regional civil protection throughout the region; and*
- *a recognised corporate framework for participating with Category One and Two responders in any combined response.*

The plan will have three main elements:

- *procedures for activating the crisis facilities in Government Office;*
- *procedures for activating the RCCC; and*
- *procedures for communicating with the local level, other than regions and the centre of government.*

3.2 TRAINING & EXERCISING WITHIN THE LONDON RESILIENCE PARTNERSHIP

A Training and Exercising Strategy has been developed, outlining the training which is being done on a regional level across the London Resilience Partnership. The strategy does not make reference to the training which is delivered within each organisation.

Familiarisation sessions are delivered to staff across the London Resilience Partnership on the alterations which have been made to existing plans, and new plans are validated with table top exercises involving representatives from across the Partnership.

A multi-agency Regional Gold Exercise is staged approximately every eighteen months, which is designed to exercise the strategic decision making of the Partnership and the operation of the regional Gold Co-ordination Group.

The Partnership's Training and Exercising Strategy for 2010-2012 will be developed in conjunction with the Olympic Security Directorate and Civil Contingencies Secretariat during 2009 to better co-ordinate the London programme in the national and Olympics context.

3.3 CATEGORY ONE & TWO RESPONDERS

Part 1 of the Civil Contingencies Act 2004 establishes a clear set of roles and responsibilities for those organisations involved in emergency preparation and response at the local level. The Act divides local responders into two categories, imposing a different set of duties on each.

Category One organisations are those at the core of the response, such as blue light emergency services, local authorities, NHS and other health bodies.

These organisations are subject to the full set of civil protection duties including risk assessment, development of emergency plans, the establishment of Business Continuity arrangements, the warning and informing of the public, sharing of information with other agencies to improve the response and multi-agency co-operation. Local Authorities are additionally required to provide advice to businesses and voluntary organisations about business continuity management.

Category Two organisations are co-operating bodies which are less likely to be involved in the heart of planning work but will be heavily involved in incidents that affect their sector. Category Two responders have a lesser set of duties which involve co-operating and sharing relevant information with other Category One and Two responders. Category Two organisations include transport, utility and other private sector companies among others.

3.4 RENEWING CCA ARRANGEMENTS FOR LONDON

The Cabinet Office is currently conducting a comprehensive review of the Civil Contingencies Act. The CCA Enhancement Programme will consist of a number of policy projects delivered through four phases to address specific programme objectives, each of which will require a fully consultative approach. One project is specifically to review the resilience structures and organisational roles in London.

SECTION 4 - REGIONAL RESPONSE TO A MAJOR INCIDENT

4.1 COMMAND & CONTROL PROTOCOL AND LESLP

The response to a major incident in London is outlined in two documents; the London Regional Command and Control Protocol and the London Emergency Services Liaison Panel Major Incident Procedure Manual (LESLP).

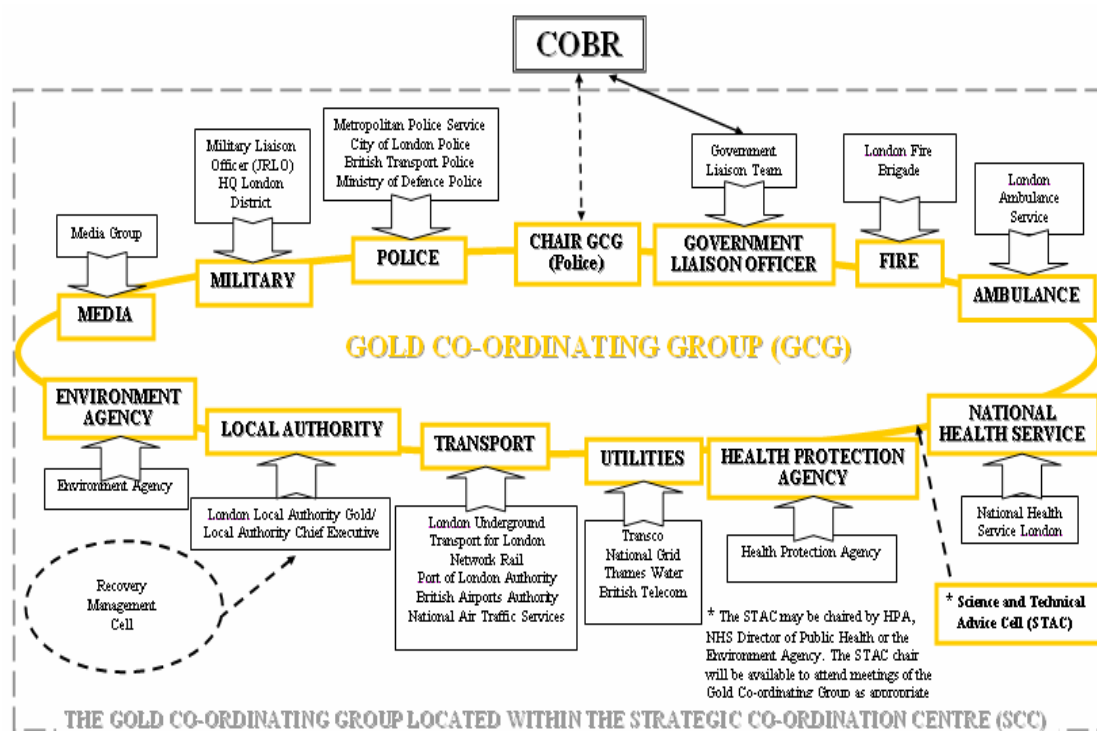
The Command and Control Protocol details the strategic co-ordination arrangements for London's response to an emergency that is either "Immediate Impact" or "Rising Tide" in origin, and the structure for Pan London Strategic Emergency Planning. The LESLP manual provides the foundations for the multi-agency strategic co-ordination amongst the blue light emergency services, Local Authorities and others in the operational response to an emergency – see section 5.2 for further information.

4.2 IMMEDIATE IMPACT INCIDENT

If London were to be affected by a "Immediate Impact" major incident, a Gold Co-ordinating Group (GCG) will be formed, made up of senior representatives from a number of responding organisations within the capital – Figure 3 below illustrates the organisations making up the GCG. The GCG will be chaired by a Senior Police Officer and the purpose of the Group will be to determine the strategic aims, objectives and priorities in response to the incident.

Any such meeting will be held at the Strategic Co-ordination Centre which will be equipped to support the Gold representatives. Each representative will be supported at the Strategic Co-ordination Centre by a support cell that will be present to provide their communication and administrative needs.

Figure 3 – The formation of the Gold Co-ordinating Group:



It will be for the Gold Co-ordinating Group to consider recovery, alongside the response phase. The Recovery Management Protocol has been written to clarify how a recovery group should be formed and the objectives that they should work towards.

4.3 RISING TIDE INCIDENTS

In the event of a “Rising Tide” emergency – an event or situation which can have a lead in time of days, weeks or even months – the regional response will be the formation a London Regional Civil Contingencies Committee (RCCC). The RCCC can meet at one of three levels depending on the severity of the incident to which they responding to. The purpose of the RCCC meetings would be to develop the regional co-ordinated strategic response to the incident. The membership of these committees will be similar to that of a Gold Co-ordinating Group; however the committee will be chaired by either the Regional Minister, the Director of the Government Office for London or a nominated other, rather than by the Police as is the case in an immediate impact incident.

Agreement must be received from the Lead Government Department before an RCCC Level 2 can be formed.

4.4 FURTHER INFORMATION

Further information on both of the regional responses can be found in the London Command and Control Protocol –

http://www.londonprepared.gov.uk/downloads/ccprotocol_august2008.pdf.

SECTION 5 – THE PLANS AND PROTOCOLS OF THE LONDON RESILIENCE PARTNERSHIP

5.1 PARTNERSHIP PLANS

A number of plans and protocols are currently active in London which details the co-ordinated response to a range of emergencies across the Capital. All the documents are reviewed regularly to ensure accuracy. Due to the classification status of some of the regional plans, a limited number are not public documents. Documents which are in the public domain can be downloaded from the London Prepared website.¹ As at February 2009, the following plans/protocols are active for use by the Partnership:

- London Emergency Services Liaison Panel (LESLP) Major Incident Procedure Manual – 7th Edition
- The London Command & Control Protocol - July 2008, Version 2
- The London Recovery Management Protocol - July 2008, Version 2
- The London Mass Evacuation Plan - April 2008, Version 1
- The London Regional Flu Pandemic Response Plan – February 2009, Version 4
- The London Flood Response Strategic Plan – March 2007, Version 1
- The London Humanitarian Assistance Centre Plan – November 2006, Version 1
- The London Mass Fatality Plan – March 2007, Version 2
- London Fuel Disruption Protocol – July 2008, Version 3
- The London CBR Response Framework, December 2008, Version 1
- Government Office for London Emergency Response Plan – October 2007, Version 6
- The London Resilience Strategy for Disability Equality in Emergency Planning – September 2008, Version 1
- The London Voluntary Sector Capabilities Document – March 2008, Version 1
- The Disaster Appeal Fund
- London Science and Technical Advice Cell Arrangements – December 2008, Version 1

¹ www.londonprepared.gov.uk

5.2 DESCRIPTION OF THE PARTNERSHIP PLANS

The following plans are currently operational in London:

London Emergency Services Liaison Panel (LESLP) Major Incident Procedure Manual

The London Emergency Services Liaison Panel (LESLP) was formed in 1973 and consists of representatives from the Metropolitan Police Service, City of London Police, British Transport Police, the London Fire Brigade, the London Ambulance Service, and Local Authorities. The Port of London Authority, Maritime and Coastguard Agency, Royal Air Force, Military and voluntary sector are also represented.

The LESLP 'Major Incident Procedure Manual' provides summaries of the responses and responsibilities of each of the emergency services at a major incident in London, as well as an outline of the support role offered by local authorities.

The London Emergency Services Liaison Panel (LESLP) recognises that every major incident is different and has its own unique features. It is designed to offer a framework within which those who are responsible for the successful resolution of the incident are able to work together with maximum efficiency.

The latest version of the manual can be found at: www.leslp.gov.uk

London Command and Control Protocol

The London Command and Control Protocol details the principal mechanism for Pan London strategic emergency planning and co-operation as required by the Civil Contingencies Act (2004) for both 'Immediate Impact' and 'Rising Tide' emergencies. The protocol explains the strategic co-ordination options, roles, relationships and structures, including the Gold Co-ordinating Group and Regional Civil Contingencies Committee, which exist to support the key responding organisations and agencies. The plan also explains the linkages to obtain central government support and how the response to recovery management arrangements within London should be organised.

A copy of the London Command and Control Protocol can be found at:

http://www.londonprepared.gov.uk/downloads/ccprotocol_august2008.pdf

The London Science and Technical Advice Cell Arrangements (STAC)

The STAC arrangements document has been produced to be read in conjunction with the London Command and Control Protocol. The document provides a framework for the provision of co-ordinated scientific and technical advice to the Gold Co-ordinating Group and subsequently the Recovery Management Group. The group brings together scientific and technical advice from across London's Category One and Two responders. It aims to provide

advice on health and environmental impacts of incidents, food and water safety and monitoring of any contaminants. The STAC can also advise on all aspects of deliberate CBRN incidents, although advice pertaining to the inner cordon is provided by the Atomic Weapons Establishment and the Defence, Science and Technology Laboratory.

London Recovery Management Protocol

The London Recovery Management Protocol provides a flexible suite of options for a co-ordinated, multi-agency approach to the development and subsequent implementation of a strategy aimed at rebuilding, restoring and rehabilitating the affected community following an incident. Although the protocol is primarily aimed at a major, pan-London emergency, it could be used as a basis for recovery management for any level of incident in the Capital.

The protocol complements and is consistent with other pan-London plans, including the Command & Control Protocol. Finalised in July 2008, the protocol reflects the National Recovery Guidance and the lessons identified in the Pitt Review, Polonium 210 incident and July 2005 bombings.

The plan provides guidance which is aimed at facilitating:

- an appreciation of consequence and recovery management considerations;
- an understanding of the role of the 'Recovery Management Cell' during the response phase;
- an effective means of moving from co-ordinating the response ('Gold Co-ordinating Group') to co-ordinating recovery management ('Gold Recovery Group');
- an understanding of the role of the 'Gold Recovery Group';
- options for sub-groups and possible membership to facilitate recovery;
- roles and responsibilities of organisations who may have a recovery role.

It will be for the Gold Co-ordinating Group to form a Recovery Management Cell to consider recovery arrangements alongside the response. Once the response phase of an emergency has been completed, the Recovery Protocol contains arrangements for co-ordinating the multi-agency recovery effort.

A copy of the London Recovery Management Protocol can be found at:
www.londonprepared.gov.uk/downloads/rmprotocol_august2008.pdf

London Mass Evacuation Plan

The London Mass Evacuation Plan was finalised in April 2008 to replace the previously published Operation Sassoon. The revised plan provides a strategic framework for the evacuation of people in a part, or parts of London. The plan outlines the process by which assessments will be made, decisions taken, and action co-ordinated to achieve the evacuation of large numbers of people from places of danger in London to places of safety.

The revised plan provides clear criteria for when the plan will be triggered, utilising existing Command & Control and Warning & Informing mechanisms to manage any evacuation. The emphasis is now to encourage individuals to self evacuate wherever possible, and for those who need to be evacuated, to be sheltered within the London Boroughs and only moved out of the region as a last resort. Any evacuation will be co-ordinated by the Evacuation Co-ordination Group which will be chaired by the Police.

A copy of the London Mass Evacuation Plan can be found at:

http://www.londonprepared.gov.uk/downloads/London_Mass_Evacuation_Plan_april08.pdf

London Regional Flu Pandemic Response Plan

The London Regional Flu Pandemic Response Plan provides a comprehensive overview of London's co-ordinated planning and response arrangements for dealing with an Influenza Pandemic.

The plan details the phase-by-phase actions and outputs for organisations within the London Resilience Partnership, supporting integrated preparedness and the development of community and organisational responses which are appropriate to local circumstances, yet consistent enough to ensure a robust and effective regional response to pandemic influenza.

The plan is based around the World Health Organisation's 6 phase model and the 4 UK Alert Level structures for pandemic influenza. Specifically, the plan provides:

- Information about pandemic influenza and the World Health Organisation's Phases and UK Alert Levels;
- Planning guidance, including information relating to planning assumptions;
- Information on business continuity planning;
- Clarification of the pre-response and response arrangements within the context of a pandemic influenza and the thresholds for their activation;
- Detailed, phase-by-phase actions and outputs for organisations within the London Resilience Partnership;
- Clarification of the roles and responsibilities of all key partners during the distinct phases of planning and response to an influenza pandemic.
- Guidance for the operation of local, multi-agency fora, known as the Influenza Pandemic Committees (IPCs);
- Clarification of the requirements for reports and returns;
- Information on the reconstitution and recovery phases of a pandemic.

Version 4 of the London Regional Flu Pandemic Response Plan follows a national review of multi-agency pandemic planning carried out by the Cabinet

Office in 2008. Version 4 of plan will be validated at an exercise held during 2009 and relevant lessons learnt will be assimilated into forthcoming versions.

Additionally, at the regional level, an Excess Deaths Task & Finish Group has been established to develop a strategic, multi-agency London Excess Deaths Plan to be approved in 2009. The Excess Deaths Plan will complement the London Regional Flu Pandemic Response Plan and provides guidance on different ways of working with respect to funeral services, burials and cremations, coroners' death registration and mortuary capacity.

Version 4 of the London Flu Pandemic Response Plan is currently not available; Version 3 can be found at:

www.londonprepared.gov.uk/downloads/flu_pandemic_response_plan_v3.pdf

London Flood Response Strategic Plan

The London Flood Response Strategic Plan overarches local area and individual agency plans. It is complemented by the existing London Command and Control arrangements, the London Mass Evacuation Plan and Recovery Management protocols. The plan sets out the risk assessment, the thresholds and triggers, and the roles and responsibilities of partner agencies in response to a large scale significant flood in London.

The primary objective of the plan is to enable the protection of life and the mitigation of property and environment damage. The plan refers to the guidance from Defra to Category One responders with regards to spatial planning and development issues. Whilst the primary focus of the plan is on tidal flooding from the River Thames and on fluvial flooding from the tributaries that flow into the river, the plan's generic principles can additionally be applied to surface water flooding.

Following London's experiences in last summer's floods and the recommendations made by Sir Michael Pitt, this plan is under review.

A copy of the London Flood Response Plan can be found at:

http://www.londonprepared.gov.uk/downloads/flood_response_plan.pdf

London Humanitarian Assistance Centre Plan

The Humanitarian Assistance Centre Plan provides guidance for the delivery of a London Humanitarian Assistance Centre in the event of an "emergency". This plan should be read in conjunction with the LESLP manual which outlines the use and operation of additional assistance centres – Rest Centres, Survivor Reception Centre, and Family & Friends Reception Centres.

The London Humanitarian Assistance Centre should be seen as a facility where bereaved families, survivors and anyone else directly affected by the incident, can receive information and appropriate support from relevant agencies – without the need for immediate referral elsewhere. The key purpose of the Humanitarian Assistance Centre (HAC) is to:

- act as a focal point for the giving and receiving of information and assistance to bereaved families and friends, survivors and to anyone else affected;
- enable those affected to benefit from appropriate information and assistance in a timely and co-ordinated manner;
- enable the gathering of forensic samples where appropriate (in order to assist the identification process) in a timely manner;
- offer access to a range of services that will allow affected people to make informed choices according to their needs; and
- ensure a seamless multi-agency approach to humanitarian assistance in emergencies that should minimise duplication and avoid gaps.

The plan outlines that the decision to open a Humanitarian Assistance Centre will be made by the Strategic Co-ordinating Group and this will be determined after giving consideration to the scale of the incident alongside the needs of the people relative to their welfare requirements.

A copy of the London Humanitarian Assistance Centre Plan can be found at:

<http://www.londonprepared.gov.uk/downloads/lhacplan.pdf>

London Mass Fatality Plan

The London Mass Fatality Plan sets out how London will respond to an incident involving large numbers of human fatalities. The plan also details the Capital's response to an overseas incident which calls for the identification and repatriation of large numbers of UK nationals.

The plan is designed to provide tactical options and guidance to all agencies responding to a mass fatality incident and it provides detailed information that is designed to assist in the administration of a broad range of operational matters allied to the management of the deceased.

The plan documents the tiers of implementation from a local response through to accessing Central Assistance to supplement local options.

The non restricted elements of this plan are available at:

<http://www.londonprepared.gov.uk/downloads/LMFPMainBodyV2.pdf>

London Regional Fuel Disruption Protocol

The London Fuel Disruption Protocol has been developed in support of the Department for Business, Enterprise and Regulatory Reform's National Emergency Plan – Fuel. The plan provides the regional response to the national arrangements which is designed to deal with two broad scenarios – short term significant disruption to fuel supplies, and secondly, a longer term shortage of fuel.

The London Fuel Disruption Protocol covers the different phases of the response through to the introduction of emergency powers under the Energy Act. The Plan sets out:

- the co-ordination arrangements;
- roles and responsibilities of organisations;
- the strategic and tactical responses to any fuel disruption affecting the Capital.

Ownership of the national plan has now transferred to the Department of Energy & Climate Change who are in the process of reviewing the plan.

The London Chemical, Biological & Radiological Response Framework

This strategic plan sets out London's capability to respond to a deliberate release of a chemical, biological and radiological contaminant. The plan details the roles and responsibilities of the responding agencies through the key phases of an incident:

- response
- consolidation
- recovery
- return to normality

Details are provided around specialist organisations and capabilities within this area.

Due to the nature of the information held within this plan it is not disclosable.

Government Office for London Emergency Response Plan

The Government Office for London Emergency Response Plan details the role and responsibilities of the Government Office for London in the response to an incident, or emergency, affecting the Capital and how these would be triggered.

The plan provides an understanding of the Government Office's role in an emergency, specifically the role of the Government Liaison Officer for most scenarios, providing the link between the London response and the Central Government, and to provide the secretariat and deputy chairs for the Regional Civil Contingencies Committee.

London Resilience Strategy for Disability Equality in Emergency Planning

The Disability Discrimination Act (DDA) 2005 introduced a duty on all public bodies to promote equality of opportunity for disabled people. This duty includes ensuring that the needs of disabled people are integrated into all policies, practices and procedures.

This London Resilience Strategy has been created with the purpose of assisting partnership agencies to consider the implications of the DDA in the context of multi-agency strategic emergency planning by outlining the key themes that must be considered when dealing with people with disabilities.

A copy of the London Resilience Strategy for Disability Equality in Emergency Planning can be found at:

<http://www.londonprepared.gov.uk/londonplans/emergencyplans/disability.jsp>

The Voluntary Sector Capabilities Document

The Voluntary Sector Capabilities Document has been designed to promote and raise awareness of the potential voluntary sector contribution within the London region, and can be used as a reference tool to assist Category One and Two responders when engaging with the Voluntary Sector. It sets out the Protocol is designed to set out the services and resources available from the voluntary sector in the response to an incident.

The voluntary sector is committed to providing the best possible support to the statutory services and the people of London, and they are equally committed to joint working in as many areas as possible where the greater good can be served in major or pan-London incidents.

The organisations covered are:

- Blue Cross
- The British Red Cross
- Citizens Advice Bureau
- Cruse Bereavement Care
- Faith Groups
- Royal National Lifeboat Institute (RNLI)
- Royal Society for the Protection against Cruelty to Animals (RSPCA)
- St John Ambulance
- The Salvation Army
- The Samaritans
- Victim Support
- Woman Royal Voluntary Service (WRVS)

A copy of the Voluntary Sector Capabilities Document can be found at:

<http://www.londonprepared.gov.uk/downloads/capabilities.pdf>

Disaster Appeal Fund Plan

The Disaster Appeal Fund Plan was developed by the Greater London Authority for a catastrophic event occurring in the Greater London area and is endorsed and supported by the London Regional Resilience Forum. The plan is based on the experience in setting up an appeal fund following bombings in London on 7th July 2005.

If the decision to launch an appeal fund is made, the Mayor will make a public announcement stating that the fund has been established, what its purposes

are and how donations can be made. The fund will be run as an independent Charitable Trust and, as an initial temporary arrangement, the Trust will be run and managed by a group of interim trustees who will be senior officers of the Greater London Authority.

The plan is focused upon the temporary arrangements required to establish the fund by the GLA – it does not cover the period after transfer. The plan sets out:

- What circumstances are likely to trigger a disaster appeal fund and how it will be launched;
- How to manage the Fund in its early weeks, and how the GLA would withdraw from it at the appropriate time.

This plan is not a public document and is held by the Greater London Authority.

London Local Authority Gold Operating Procedures

The London Fire Brigade – Emergency Planning owns, on behalf of all the London Boroughs, the London Local Authority Gold Operating Procedures. The function of the Local Authority Gold is to manage the collective response of London's local authorities to an incident requiring the opening of the Strategic Co-ordination Centre. This function is supported by a resolution passed by each London Borough and the Common Council of the City of London which delegates powers to Chief Executives to incur expenditure and deploy resources on behalf of one-another. The co-ordination of London's 33 local authorities will be directed by Local Authority Gold through the London Local Authority Co-ordination Centre (LLACC), also provided by the London Fire Brigade.

SECTION 6 - COMMUNICATION

As part of its Warning and Informing Strategy, the London Resilience Partnership has developed a number of formal methods for communicating with both the Partnership and the public, both in “peacetime” and in the event of an emergency.

6.1 LONDON PREPARED WEBSITE – www.londonprepared.gov.uk

The London Resilience Partnership website, London Prepared, is a part of the programme of Warning and Informing work being undertaken across the region. The website carries up to date information on emergency preparedness in the capital and is primarily aimed at stakeholder organisations and the business community in London. The site contains a wide range of resources including:

- Detailed emergency plans for London;
- Links in case studies;
- Information on current hazards;
- Advice to businesses on preparing for, and recovery after, an emergency;
- Guidance to all agencies on responding to emergencies.

The website is also used by the Partnership to provide up to date emergency information when a major incident occurs.

All the publicly released Partnership plans and a wide range of useful information are available for download.

6.2 THE LONDON MEDIA EMERGENCY PLAN

The London Media Emergency Plan covers the timing and activation of media operations, the establishment of a combined central press office and media centre, details of the central press team, multi agency media centres and the role of the London Media Emergency Forum. The Plan also refers to the role which the Mayor, as the “Voice of London”, will play during such an incident.

The London Media Emergency Plan is an internal plan – therefore it is not available to the public.

SECTION 7 - QUESTIONS, COMMENTS OR AMENDMENTS

Any questions, comments or requests for amendments should be directed to the London Resilience Team, by email on: enquiries-lrt@gol.gsi.gov.uk or by writing to:

London Resilience Team,
Government Office for London,
Riverwalk House,
1st Floor,
157-161 Millbank,
London,
SW1P 4RR

THIS PAGE HAS BEEN LEFT INTENTIONALLY BLANK

THIS PAGE HAS BEEN LEFT INTENTIONALLY BLANK



GOVERNMENT OFFICE
FOR LONDON

Enquiries to:

London Resilience Team
1st Floor, Riverwalk House
157 - 161 Millbank
London
SW1P 4RR

enquiries-lrt@gol.gsi.gov.uk
www.londonprepared.gov.uk