

A&E Clinical Quality Indicators

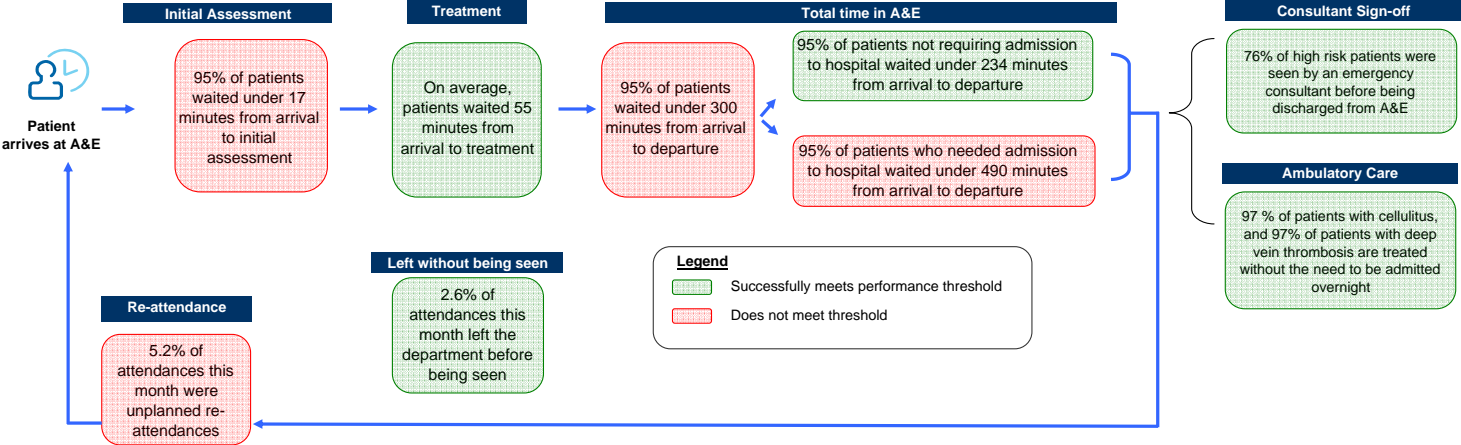
Overview

This dashboard presents a comprehensive and balanced view of the care delivered by our A&E department, and reflects the experience and safety of our patients and the effectiveness of the care they receive. These indicators will support patient

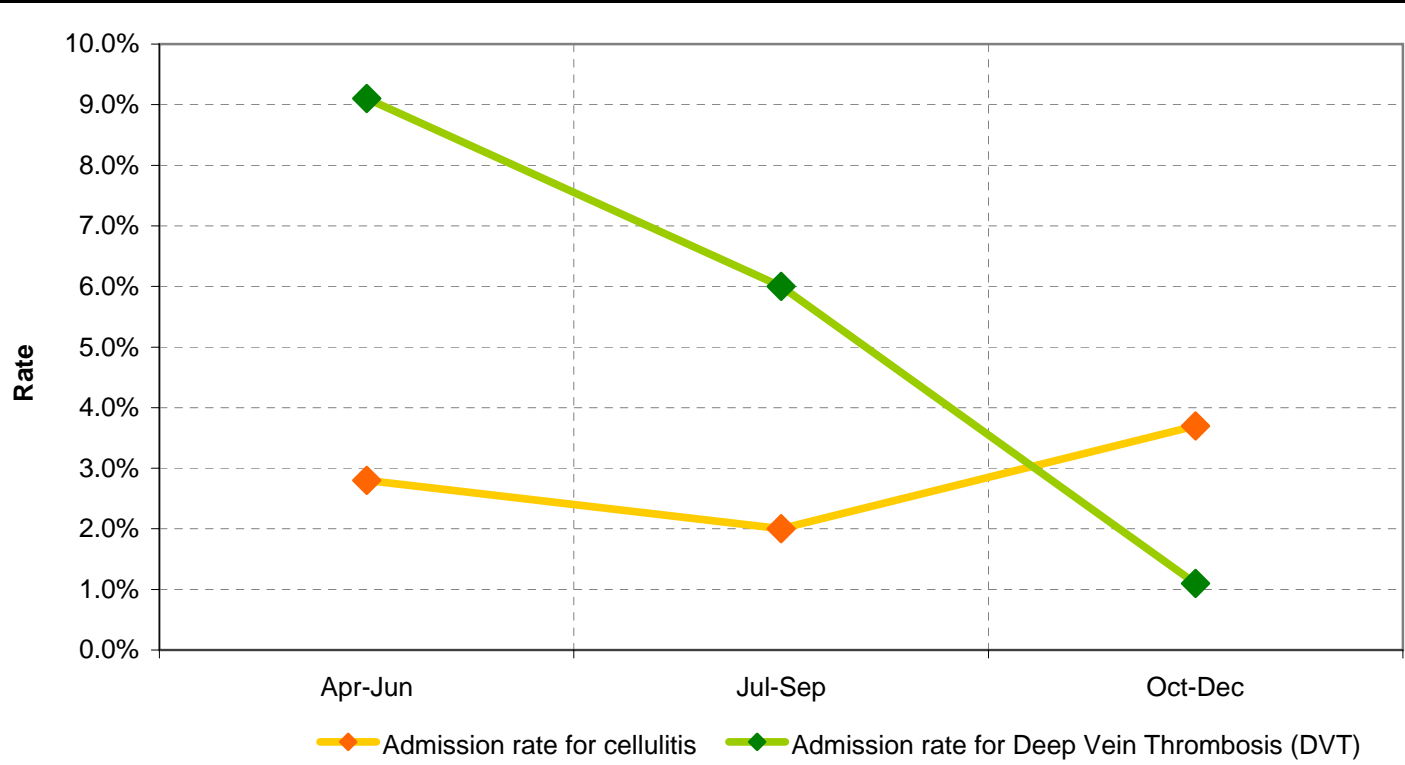
General Information

St George's Hospital NHS Trust
 Type 1 (Major)
 Published January 20th for Jan-2012

Summary of performance - January 2011



Ambulatory Care



Definition of indicator

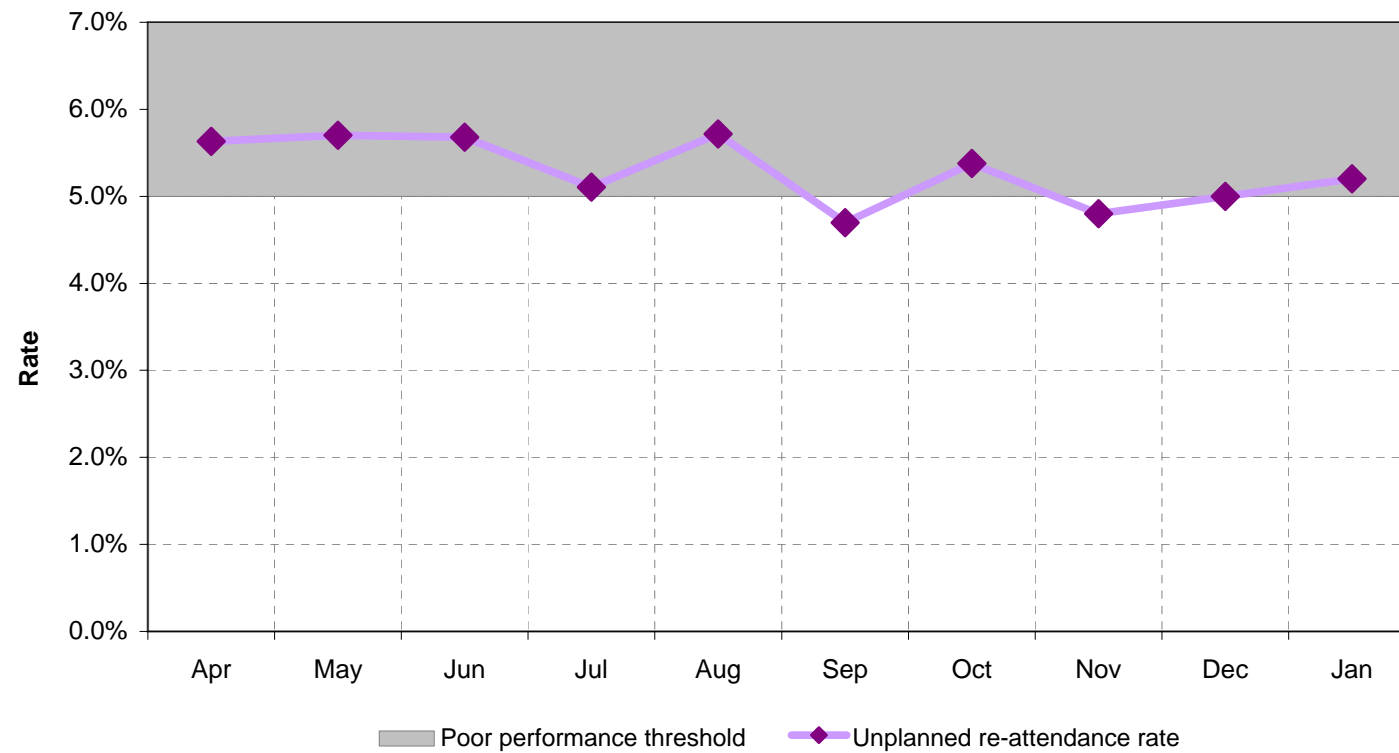
Ambulatory care sensitive conditions: the number of admissions for cellulitis and deep vein thrombosis (DVT) per head of weighted population.
 Ambulatory care for emergency conditions: the percentage of A&E attendances for cellulitis and deep vein thrombosis (DVT) that end in admission

Narrative

This presents the percentage of attendances for cellulitus and deep vein thrombosis (DVT) that were admitted to the hospital. In the first 6 months of this year the admission rates for cellulitis and DVT were below the national target of 10%.

4%	This quarter (ceullitis)
↑	Compared to last qtr
	Data quality
1%	This quarter (DVT)
↓	Compared to last qtr
	Data quality

Unplanned Re-attendance Rate



Definition of indicator

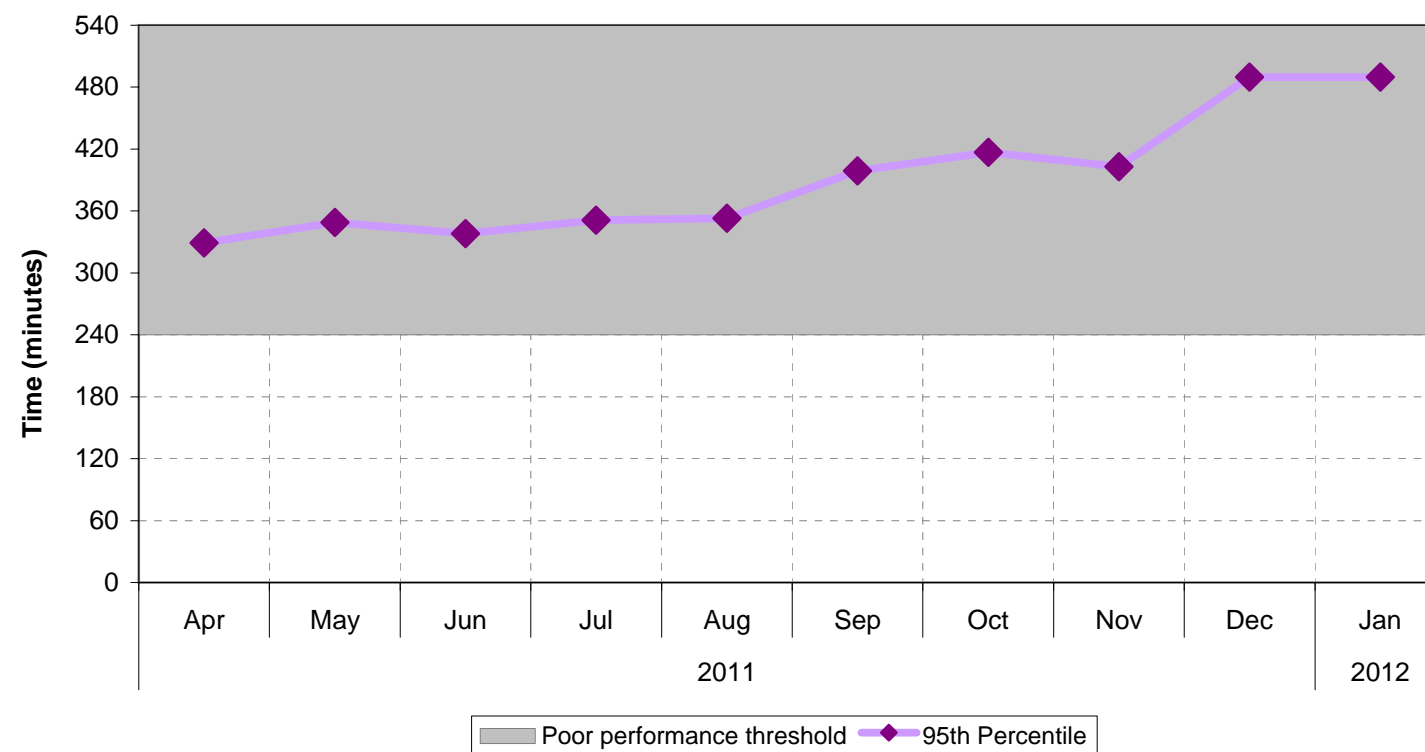
Unplanned re-attendance at A&E within 7 days of original attendance (including if referred back by another health professional)

Narrative

This reflects the number of patients who return to A&E as an unplanned re-attendance within 7-days. The national target is 5% and SGH has met this target for 3 of the last 5 months. An indepth review of the data will take place focusing on individual specialisms.

5.2%	95th percentile this month
↑	Compared to last month
	Data quality

Total time spent in the A&E Department (Admitted)



Definition of indicator

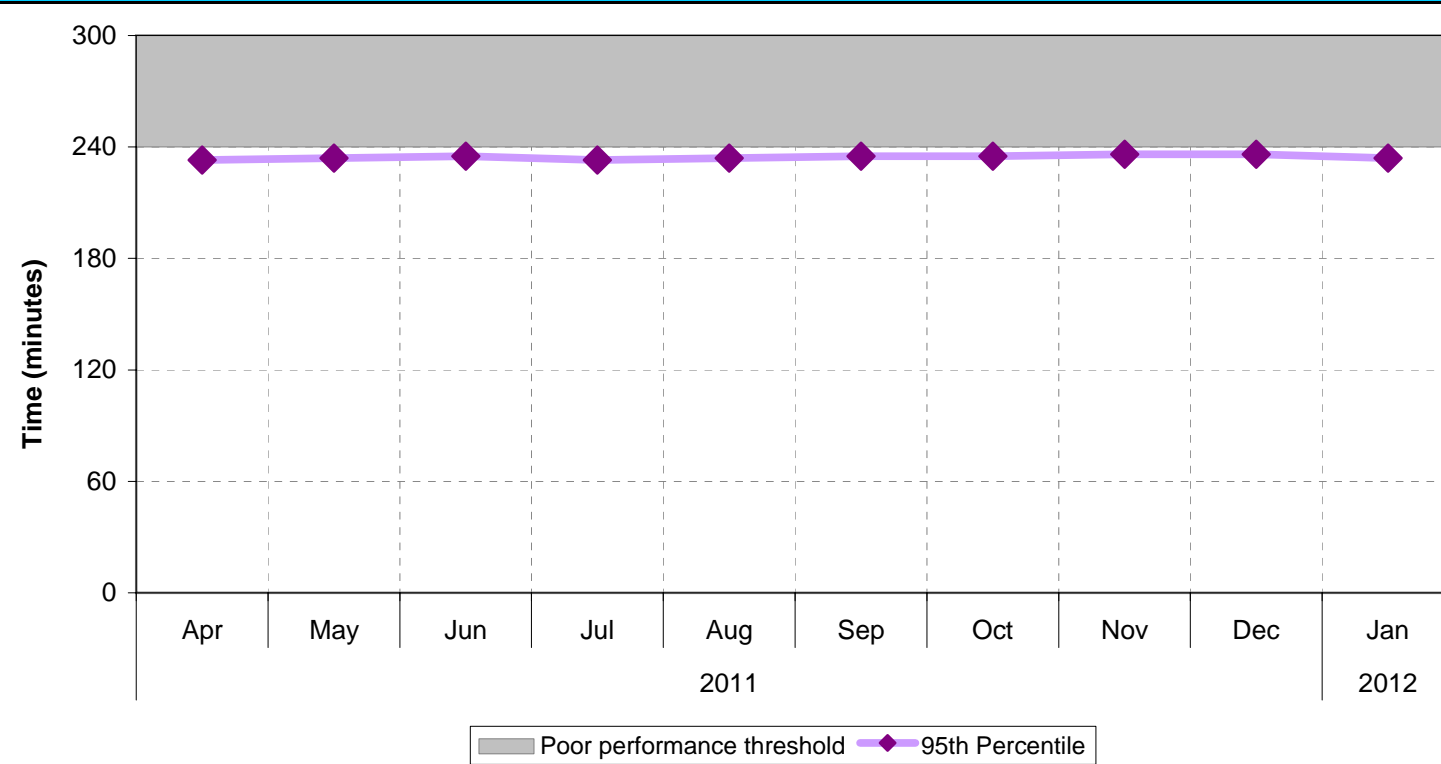
The median, 95th percentile and longest total time spent by patients in the A&E department, for admitted and non-admitted patients

Narrative

This shows the total amount of time patients are in the A&E department before they are admitted to a ward. In the first 10 months of this year the 95th percentile LOS for admitted patients ranged between 330 and 490 minutes. The national target is a LOS of 240 minutes. SGH currently sits at median wait of 231 minutes, with a single longest wait of 1308 minutes, this is primarily attributed to the clinically need to retain these patients in the department

490	95th percentile this month
↔	Compared to last month
	Data quality

Total time spent in the A&E Department (Non-Admitted)



Definition of indicator

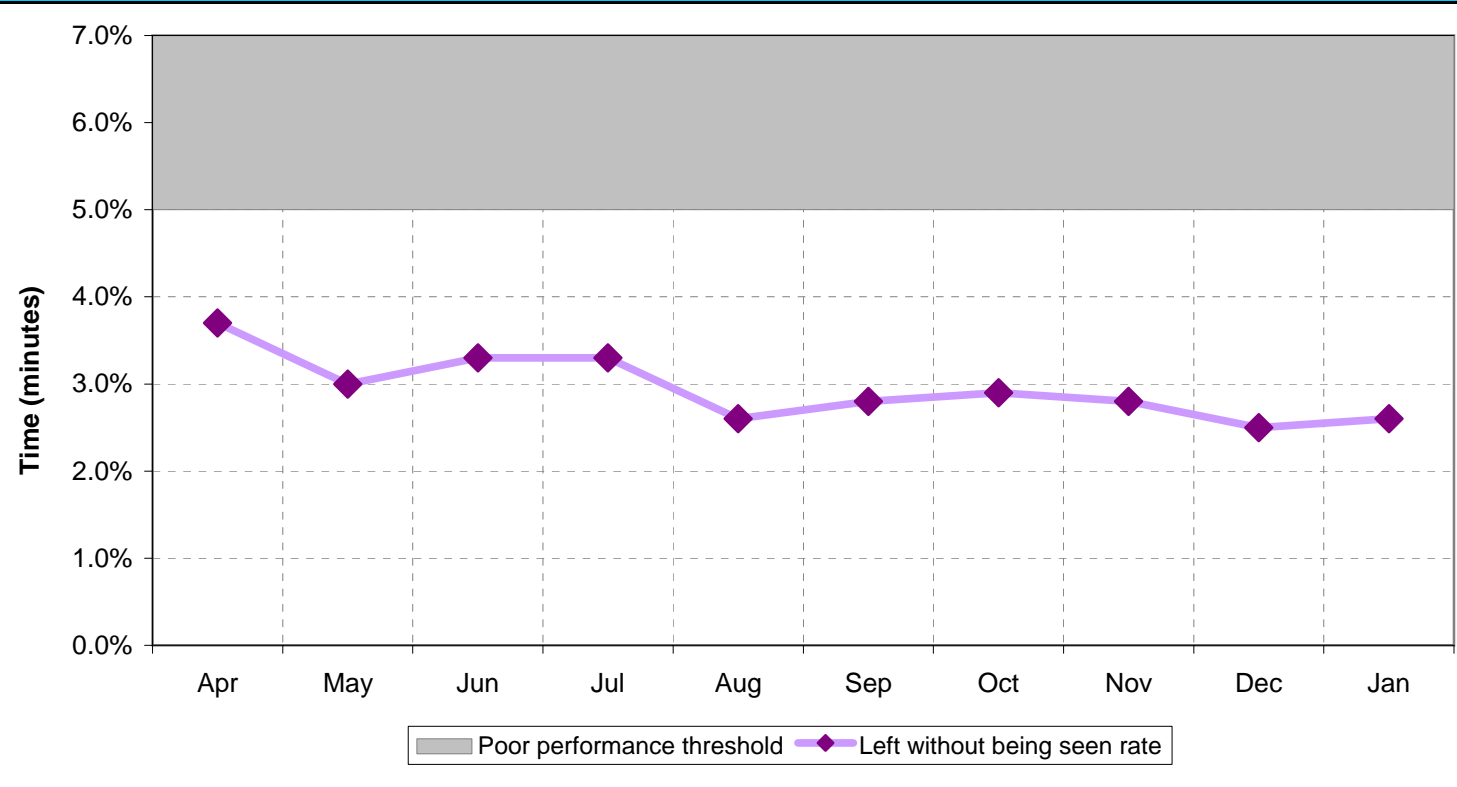
The median, 95th percentile and longest total time spent by patients in the A&E department, for admitted and non-admitted patients

Narrative

This shows the total amount of time patients are in the A&E department before they are discharged. For non-admitted patients the 95th percentile waits have been under 4 hours for each month this year.

234	95th percentile this month
↓	Compared to last month
	Data quality

Left Without Being Seen

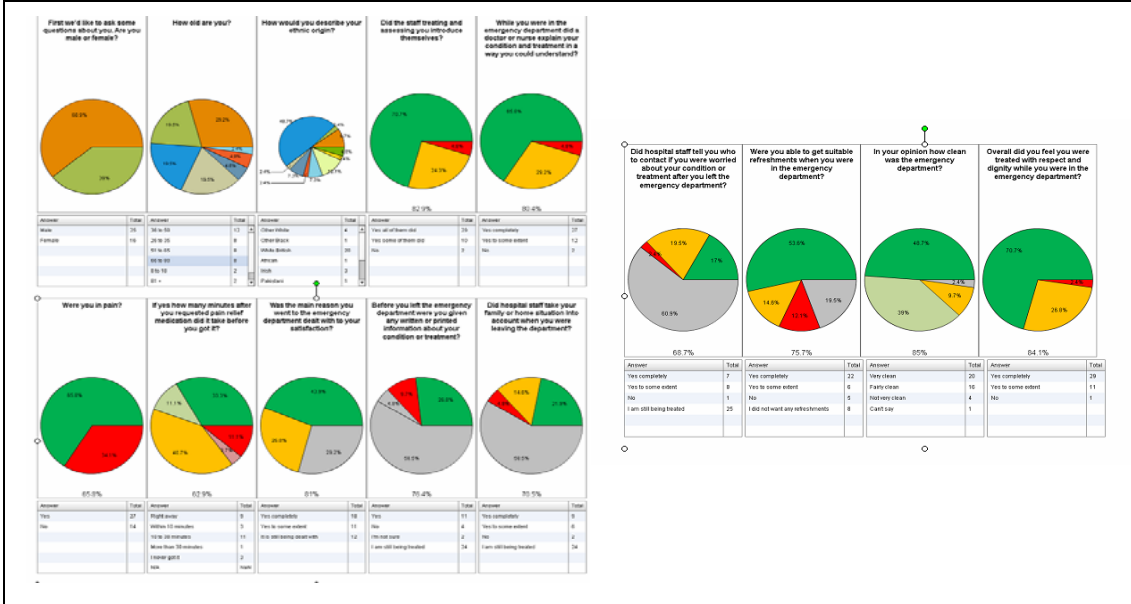


Definition of indicator
The percentage of people who leave the A&E department without being seen

Narrative
Reflective of the number of patients that leave the department after booking in at the reception desk and then who do not wait to be seen by a member of the clinical team. The number of patients who left the A&E department without being seen has consistently been less than the target of 5% and for January the figure was 2.6%.

2.6%	95th percentile this month
↑	Compared to last month
	Data quality

Service Experience



Definition of indicator

Narrative description of what has been done to assess the experience of patients using A&E services and their carers, what the results were, and what has been done to improve services in light of the results

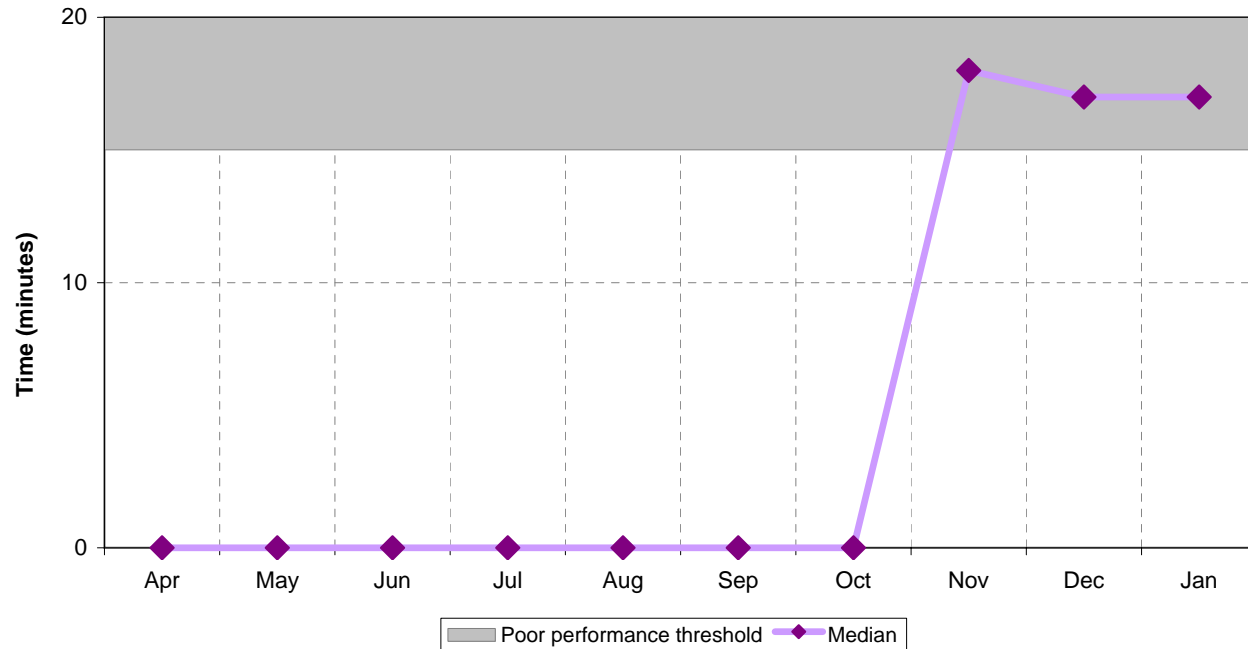
Narrative

Patients attending the A&E department are asked to complete a Patient Experience Tracker (PET) of their experience. These results are collated and by the PET team and disseminated to the department. These results are reviewed and discussed at the weekly A&E Senior Management Team meeting.

The PET questionnaire is currently being updated to include additional questions as per recommendations from the South West London Sector to be bench marked against other local hospitals

Data quality

Time to Initial Assessment



Definition of indicator

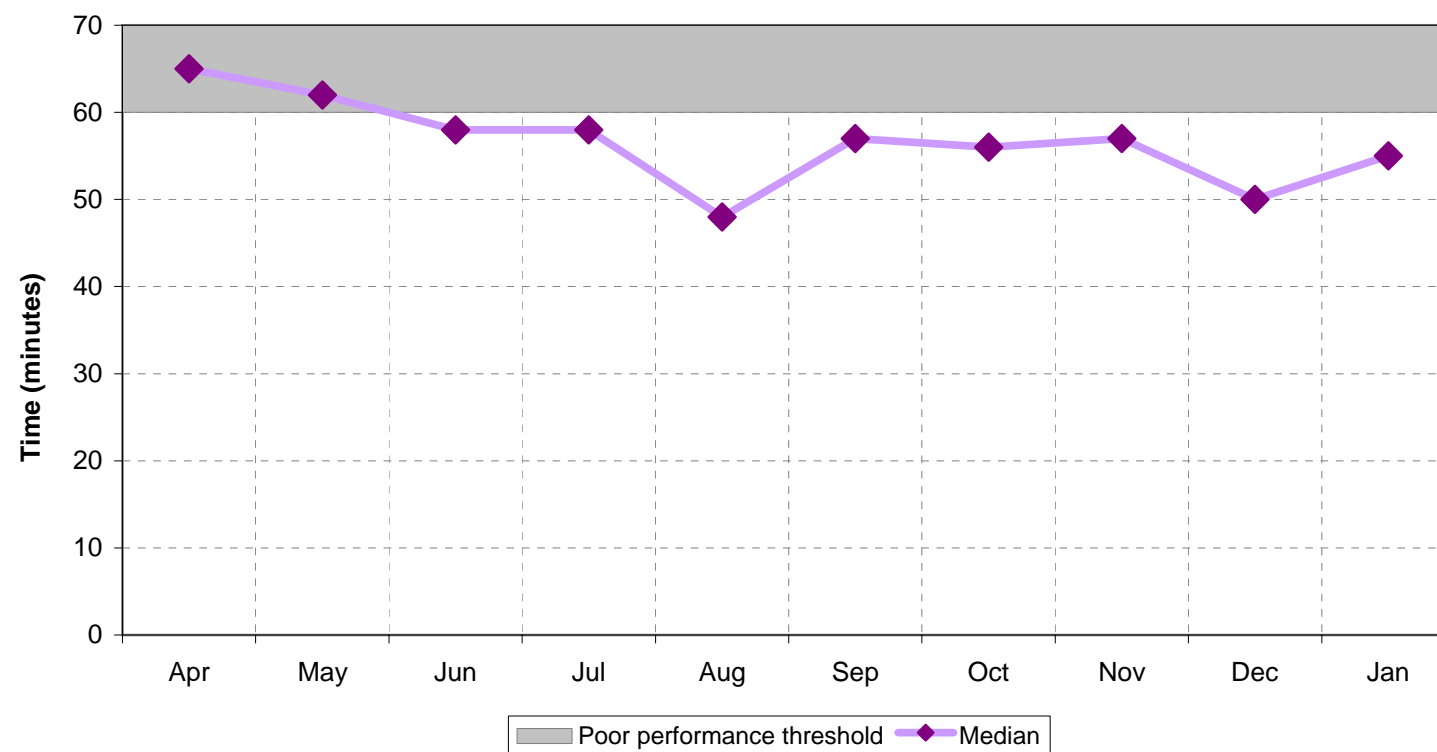
Time from arrival to start of full assessment, which includes a pain score and early warning score, for all patients arriving by ambulance

Narrative

Data graph is representative of patients arriving by LAS directly into the Resus department.
 From 5 December 2011, this data also include all other patients arriving by LAS. This data is collected by a member of staff based at LAS triage carrying out the assessment, (brief history, pain and early warning scores, including vital signs) at point of handover and entered onto the Trust Patient Administration System (PAS)

17	Median Wait for this month
↔	Compared to last month
	Data quality

Time to Treatment in A&E



Description of data

The time to treatment relates to the time in minutes that our patients wait to be seen by a member of the clinical team who is able to diagnose and make an initial plan of treatment for them. This should be no longer than 60 minutes from initial registration. The Trust has reached this target for each of the last 6 months.

Narrative

Shows the time in minutes that patients waited to be seen by a member of the clinical team who is able to diagnose and make an initial plan of treatment. This should be no longer than 60 minutes from initial registration. SGH has reached this target over the last 5 months, a breakdown of December is below:-

- Median wait – 55 minutes
- Max wait – 909 minutes
- 95th percentile – 136 minutes

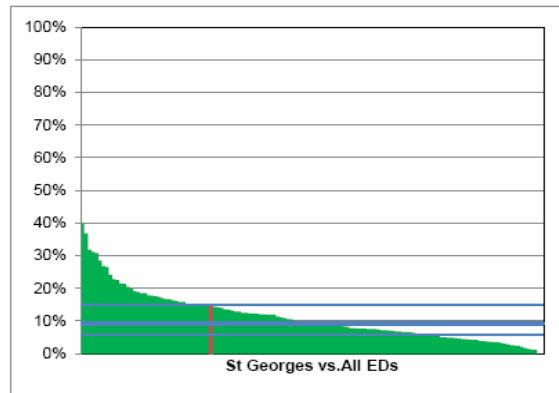
55	Median Wait for this month
↑	Compared to last month
	Data quality

Consultant Sign-Off

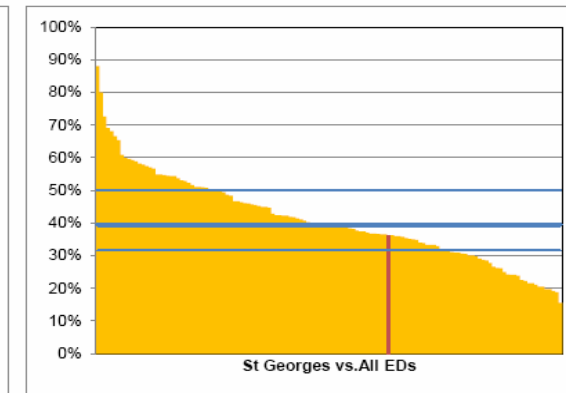
Table 2	All audited patients					
	St Georges			UK Totals		
% of all audited patients	seen by	discussed with	ED notes reviewed after discharge by	seen by	discussed with	ED notes reviewed after discharge by
a consultant / associate specialist	15%	25%	0%	11%	11%	7%
a ST4 or more senior doctor*	36%	40%	0%	41%	30%	12%

* consultant, associate specialist, staff grade, specialty doctor, senior clinical fellow, or ST4-7+

Chart 2: Percentages of all audited patients seen ...
... by a consultant or associate specialist



... by a doctor of seniority ST4 or above*



Definition of indicator

The percentage of patients presenting at type 1 and 2 (major) A&E departments in certain high-risk patient groups (adults with non-traumatic chest pain, febrile children less than 1 year old and patients making an unscheduled return visit with the same condition within 72 hours of discharge) who are reviewed by an emergency medicine consultant before being discharged.

Narrative

Percentage of all audited patients signed off by consultant = 40% (nationally = 22%)

Percentage of all audited patients signed off by Consultant (or ST4 and above if consultant not immediately available = 76% (nationally = 71%)

SGH total of 76% percentage of patients signed off by a consultant

76%	Consultant Sign-Off
	Compared to last period
	Data quality